



[Go to Product page](#)

Datasheet for ABIN654525

anti-G Antigen 13 antibody (N-Term)

3 Images

Overview

Quantity:	400 µL
Target:	G Antigen 13 (GAGE13)
Binding Specificity:	AA 1-30, N-Term
Reactivity:	Human
Host:	Rabbit
Clonality:	Polyclonal
Conjugate:	This G Antigen 13 antibody is un-conjugated
Application:	Western Blotting (WB), Flow Cytometry (FACS), Immunohistochemistry (Paraffin-embedded Sections) (IHC (p))

Product Details

Immunogen:	This GAGE13 antibody is generated from rabbits immunized with a KLH conjugated synthetic peptide between 1-30 amino acids from the N-terminal region of human GAGE13.
Clone:	RB28268
Isotype:	Ig Fraction
Purification:	This antibody is purified through a protein A column, followed by peptide affinity purification.

Target Details

Target:	G Antigen 13 (GAGE13)
Alternative Name:	GAGE13 (GAGE13 Products)

Target Details

Molecular Weight: 12957

NCBI Accession: [NP_001091882](#)

UniProt: [Q4V321](#)

Application Details

Application Notes: WB: 1:1000. IHC-P: 1:50~100. FC: 1:10~50

Restrictions: For Research Use only

Handling

Format: Liquid

Buffer: Purified polyclonal antibody supplied in PBS with 0.09 % (W/V) sodium azide.

Preservative: Sodium azide

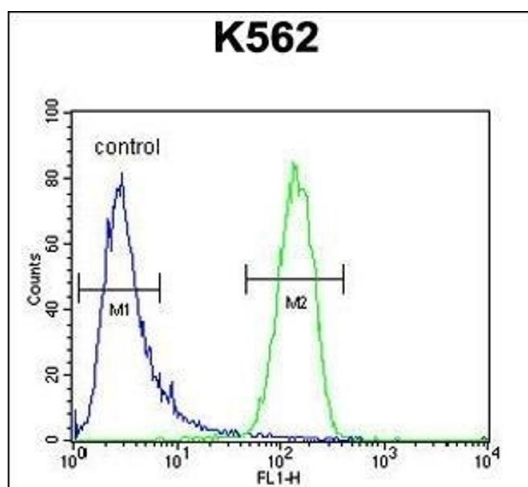
Precaution of Use: This product contains Sodium azide: a POISONOUS AND HAZARDOUS SUBSTANCE which should be handled by trained staff only.

Storage: 4 °C, -20 °C

Storage Comment: Maintain refrigerated at 2-8 °C for up to 6 months. For long term storage store at -20 °C in small aliquots to prevent freeze-thaw cycles.

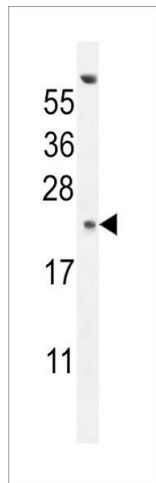
Expiry Date: 6 months

Images



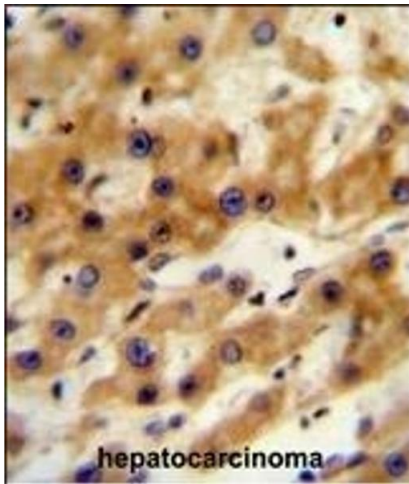
Flow Cytometry

Image 1. GAGE13 Antibody (N-term) (ABIN654525 and ABIN2844247) flow cytometric analysis of K562 cells (right histogram) compared to a negative control cell (left histogram). FITC-conjugated goat-anti-rabbit secondary antibodies were used for the analysis.



Western Blotting

Image 2. GAGE13 Antibody (N-term) (ABIN654525 and ABIN2844247) western blot analysis in K562 cell line lysates (35 µg/lane). This demonstrates the GAGE13 antibody detected the GAGE13 protein (arrow).



Immunohistochemistry (Paraffin-embedded Sections)

Image 3. GAGE13 Antibody (N-term) (ABIN654525 and ABIN2844247) immunohistochemistry analysis in formalin fixed and paraffin embedded human hepatocarcinoma followed by peroxidase conjugation of the secondary antibody and DAB staining. This data demonstrates the use of the GAGE13 Antibody (N-term) for immunohistochemistry. Clinical relevance has not been evaluated.