

Datasheet for ABIN654533
anti-GOLGA2P5 antibody (C-Term)[Go to Product page](#)

2 Images

Overview

Quantity:	400 µL
Target:	GOLGA2P5
Binding Specificity:	AA 83-112, C-Term
Reactivity:	Human
Host:	Rabbit
Clonality:	Polyclonal
Conjugate:	This GOLGA2P5 antibody is un-conjugated
Application:	Western Blotting (WB), Flow Cytometry (FACS)

Product Details

Immunogen:	This GOLGA2L1 antibody is generated from rabbits immunized with a KLH conjugated synthetic peptide between 83-112 amino acids from the C-terminal region of human GOLGA2L1.
Clone:	RB27834
Isotype:	Ig Fraction
Purification:	This antibody is purified through a protein A column, followed by peptide affinity purification.

Target Details

Target:	GOLGA2P5
Alternative Name:	GOLGA2L1 (GOLGA2P5 Products)

Target Details

Molecular Weight:	15482
UniProt:	Q9HBQ8

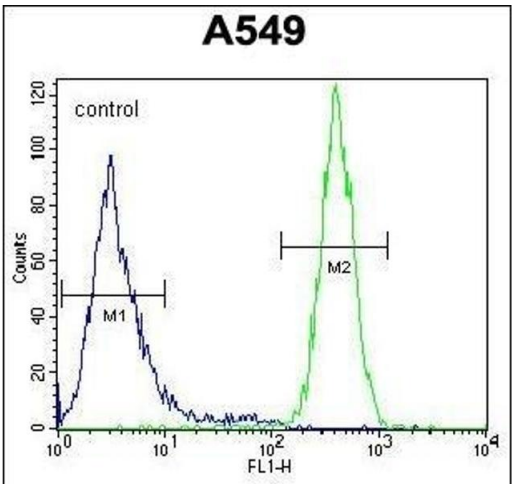
Application Details

Application Notes:	WB: 1:1000. FC: 1:10~50
Restrictions:	For Research Use only

Handling

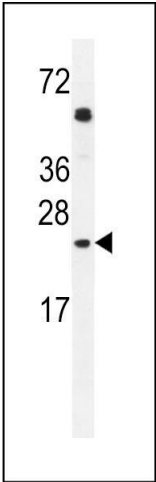
Format:	Liquid
Buffer:	Purified polyclonal antibody supplied in PBS with 0.09 % (W/V) sodium azide.
Preservative:	Sodium azide
Precaution of Use:	This product contains Sodium azide: a POISONOUS AND HAZARDOUS SUBSTANCE which should be handled by trained staff only.
Storage:	4 °C, -20 °C
Storage Comment:	Maintain refrigerated at 2-8 °C for up to 6 months. For long term storage store at -20 °C in small aliquots to prevent freeze-thaw cycles.
Expiry Date:	6 months

Validation report #103541 for Western Blotting (WB)



Flow Cytometry

Image 1. GOLGA2L1 Antibody (C-term) (ABIN654533 and ABIN2844251) flow cytometric analysis of A549 cells (right histogram) compared to a negative control cell (left histogram). FITC-conjugated goat-anti-rabbit secondary antibodies were used for the analysis.



Western Blotting

Image 2. GOLGA2L1 Antibody (C-term) (ABIN654533 and ABIN2844251) western blot analysis in A549 cell line lysates (35 µg/lane). This demonstrates the GOLGA2L1 antibody detected the GOLGA2L1 protein (arrow).