

Datasheet for ABIN654539
anti-DEGS2 antibody (C-Term)[Go to Product page](#)

2 Images

Overview

Quantity:	400 µL
Target:	DEGS2
Binding Specificity:	AA 261-290, C-Term
Reactivity:	Human
Host:	Rabbit
Clonality:	Polyclonal
Conjugate:	This DEGS2 antibody is un-conjugated
Application:	Western Blotting (WB), Immunohistochemistry (Paraffin-embedded Sections) (IHC (p))

Product Details

Immunogen:	This DEGS2 antibody is generated from rabbits immunized with a KLH conjugated synthetic peptide between 261-290 amino acids from the C-terminal region of human DEGS2.
Clone:	RB27857
Isotype:	Ig Fraction
Predicted Reactivity:	B, M
Purification:	This antibody is purified through a protein A column, followed by peptide affinity purification.

Target Details

Target:	DEGS2
Alternative Name:	DEGS2 (DEGS2 Products)

Target Details

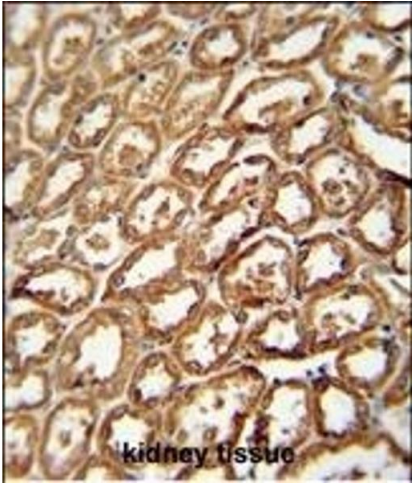
Background:	DEGS2 encodes a bifunctional enzyme that is involved in the biosynthesis of phytosphingolipids in human skin and in other phytosphingolipid-containing tissues. This enzyme can act as a sphingolipid delta(4)-desaturase, and also as a sphingolipid C4-hydroxylase.
Molecular Weight:	37197
Gene ID:	123099
NCBI Accession:	NP_996801
UniProt:	Q6QHC5

Application Details

Application Notes:	WB: 1:1000. IHC-P: 1:50~100
Restrictions:	For Research Use only

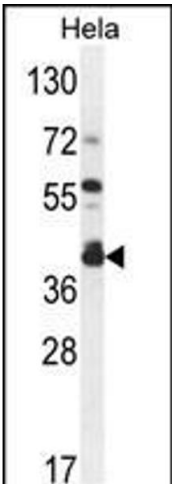
Handling

Format:	Liquid
Buffer:	Purified polyclonal antibody supplied in PBS with 0.09 % (W/V) sodium azide.
Preservative:	Sodium azide
Precaution of Use:	This product contains Sodium azide: a POISONOUS AND HAZARDOUS SUBSTANCE which should be handled by trained staff only.
Storage:	4 °C, -20 °C
Storage Comment:	Maintain refrigerated at 2-8 °C for up to 6 months. For long term storage store at -20 °C in small aliquots to prevent freeze-thaw cycles.
Expiry Date:	6 months



Immunohistochemistry (Paraffin-embedded Sections)

Image 1. DEGS2 antibody (C-term) (ABIN654539 and ABIN2844256) immunohistochemistry analysis in formalin fixed and paraffin embedded human kidney tissue followed by peroxidase conjugation of the secondary antibody and DAB staining. This data demonstrates the use of the DEGS2 antibody (C-term) for immunohistochemistry. Clinical relevance has not been evaluated.



Western Blotting

Image 2. DEGS2 Antibody (C-term) (ABIN654539 and ABIN2844256) western blot analysis in Hela cell line lysates (35 µg/lane). This demonstrates the DEGS2 antibody detected the DEGS2 protein (arrow).