

Datasheet for ABIN654541  
**anti-SPATA2L antibody (AA 206-235)**[Go to Product page](#)

## 1 Image

## Overview

Quantity:	400 µL
Target:	SPATA2L
Binding Specificity:	AA 206-235
Reactivity:	Human
Host:	Rabbit
Clonality:	Polyclonal
Conjugate:	This SPATA2L antibody is un-conjugated
Application:	Western Blotting (WB)

## Product Details

Immunogen:	This SPATA2L antibody is generated from rabbits immunized with a KLH conjugated synthetic peptide between 206-235 amino acids from the Central region of human SPATA2L.
Clone:	RB27860
Isotype:	Ig Fraction
Purification:	This antibody is purified through a protein A column, followed by peptide affinity purification.

## Target Details

Target:	SPATA2L
Alternative Name:	SPATA2L ( <a href="#">SPATA2L Products</a> )
Background:	SPATA2L belongs to the SPATA2 family. The exact function of SPATA2L is not known. There

## Target Details

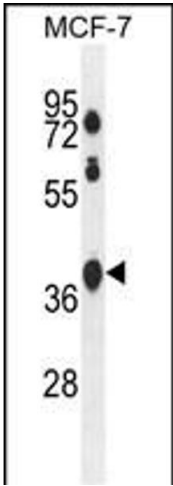
	are two different isoforms.
Molecular Weight:	46179
Gene ID:	124044
NCBI Accession:	<a href="#">NP_689552</a>
UniProt:	<a href="#">Q8IUW3</a>

## Application Details

Application Notes:	WB: 1:1000
Restrictions:	For Research Use only

## Handling

Format:	Liquid
Buffer:	Purified polyclonal antibody supplied in PBS with 0.09 % (W/V) sodium azide.
Preservative:	Sodium azide
Precaution of Use:	This product contains Sodium azide: a POISONOUS AND HAZARDOUS SUBSTANCE which should be handled by trained staff only.
Storage:	4 °C,-20 °C
Storage Comment:	Maintain refrigerated at 2-8 °C for up to 6 months. For long term storage store at -20 °C in small aliquots to prevent freeze-thaw cycles.
Expiry Date:	6 months



Western Blotting

**Image 1.** STA2L Antibody (Center) (ABIN654541 and ABIN2844257) western blot analysis in MCF-7 cell line lysates (35 µg/lane). This demonstrates the STA2L antibody detected the STA2L protein (arrow).