

Datasheet for ABIN654544  
**anti-LCN10 antibody (AA 94-123)**[Go to Product page](#)

## 2 Images

## Overview

Quantity:	400 µL
Target:	LCN10
Binding Specificity:	AA 94-123
Reactivity:	Human, Mouse
Host:	Rabbit
Clonality:	Polyclonal
Conjugate:	This LCN10 antibody is un-conjugated
Application:	Western Blotting (WB), Flow Cytometry (FACS)

## Product Details

Immunogen:	This LCN10 antibody is generated from rabbits immunized with a KLH conjugated synthetic peptide between 94-123 amino acids from the Central region of human LCN10.
Clone:	RB27870
Isotype:	Ig Fraction
Purification:	This antibody is purified through a protein A column, followed by peptide affinity purification.

## Target Details

Target:	LCN10
Alternative Name:	LCN10 ( <a href="#">LCN10 Products</a> )
Background:	May play a role in male fertility. May act as a retinoid carrier protein within the epididymis.

### Target Details

Molecular Weight:	20759
NCBI Accession:	<a href="#">NP_001001712</a>
UniProt:	<a href="#">Q6JVE6</a>

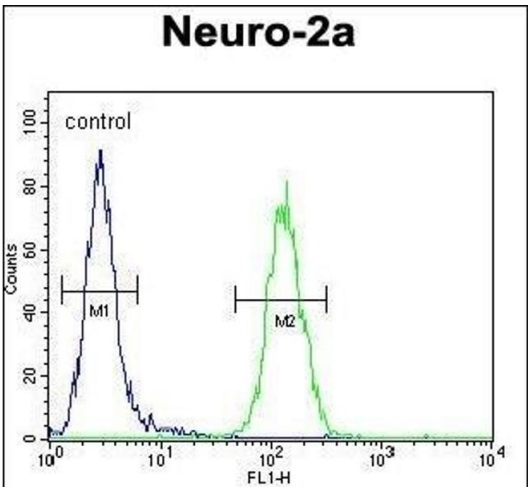
### Application Details

Application Notes:	WB: 1:1000. FC: 1:10~50
Restrictions:	For Research Use only

### Handling

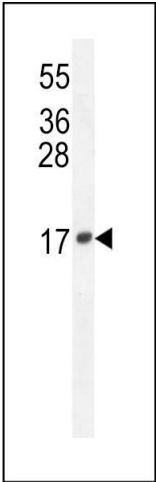
Format:	Liquid
Buffer:	Purified polyclonal antibody supplied in PBS with 0.09 % (W/V) sodium azide.
Preservative:	Sodium azide
Precaution of Use:	This product contains Sodium azide: a POISONOUS AND HAZARDOUS SUBSTANCE which should be handled by trained staff only.
Storage:	4 °C,-20 °C
Storage Comment:	Maintain refrigerated at 2-8 °C for up to 6 months. For long term storage store at -20 °C in small aliquots to prevent freeze-thaw cycles.
Expiry Date:	6 months

### Validation report #103541 for Western Blotting (WB)



#### Flow Cytometry

**Image 1.** LCN10 Antibody (Center) (ABIN654544 and ABIN2844258) flow cytometric analysis of Neuro-2a cells (right histogram) compared to a negative control cell (left histogram). FITC-conjugated goat-anti-rabbit secondary antibodies were used for the analysis.



Western Blotting

**Image 2.** LCN10 Antibody (Center) (ABIN654544 and ABIN2844258) western blot analysis in mouse Neuro-2a cell line lysates (35 µg/lane). This demonstrates the LCN10 antibody detected the LCN10 protein (arrow).