



[Go to Product page](#)

Datasheet for ABIN654550
anti-GTPBP8 antibody (AA 122-150)

3 Images

Overview

Quantity:	400 µL
Target:	GTPBP8
Binding Specificity:	AA 122-150
Reactivity:	Human
Host:	Rabbit
Clonality:	Polyclonal
Conjugate:	This GTPBP8 antibody is un-conjugated
Application:	Western Blotting (WB), Flow Cytometry (FACS), Immunohistochemistry (Paraffin-embedded Sections) (IHC (p))

Product Details

Immunogen:	This GTPBP8 antibody is generated from rabbits immunized with a KLH conjugated synthetic peptide between 122-150 amino acids from the Central region of human GTPBP8.
Clone:	RB27915
Isotype:	Ig Fraction
Predicted Reactivity:	B
Purification:	This antibody is purified through a protein A column, followed by peptide affinity purification.

Target Details

Target:	GTPBP8
---------	--------

Target Details

Alternative Name: [GTPBP8 \(GTPBP8 Products\)](#)

Molecular Weight: 32147

Gene ID: 29083

NCBI Accession: [NP_054889](#), [NP_612494](#)

UniProt: [Q8N3Z3](#)

Application Details

Application Notes: WB: 1:1000. IHC-P: 1:50~100. FC: 1:10~50

Restrictions: For Research Use only

Handling

Format: Liquid

Buffer: Purified polyclonal antibody supplied in PBS with 0.09 % (W/V) sodium azide.

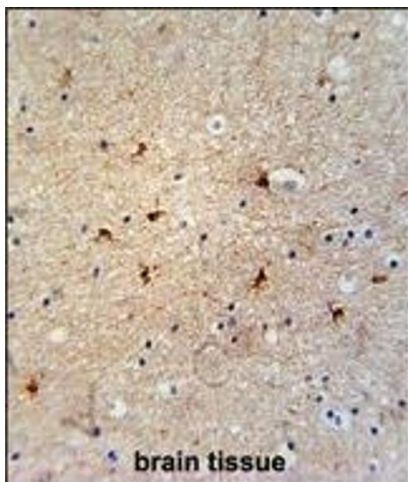
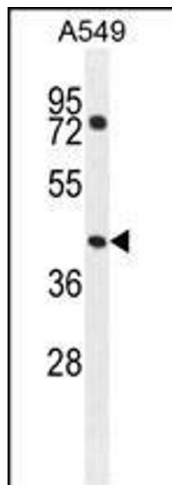
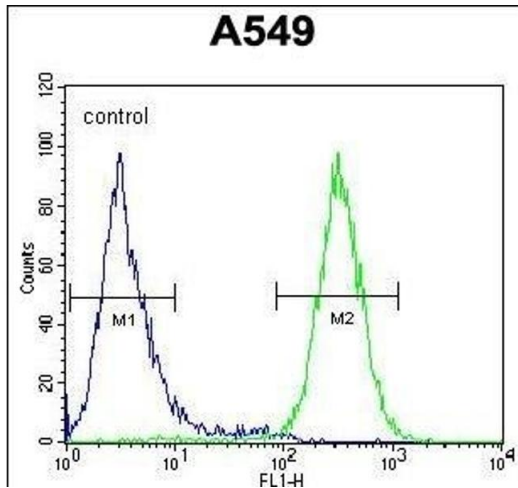
Preservative: Sodium azide

Precaution of Use: This product contains Sodium azide: a POISONOUS AND HAZARDOUS SUBSTANCE which should be handled by trained staff only.

Storage: 4 °C, -20 °C

Storage Comment: Maintain refrigerated at 2-8 °C for up to 6 months. For long term storage store at -20 °C in small aliquots to prevent freeze-thaw cycles.

Expiry Date: 6 months



Flow Cytometry

Image 1. GTPBP8 Antibody (Center) (ABIN654550 and ABIN2844261) flow cytometric analysis of A549 cells (right histogram) compared to a negative control cell (left histogram). FITC-conjugated goat-anti-rabbit secondary antibodies were used for the analysis.

Western Blotting

Image 2. GTPBP8 Antibody (Center) (ABIN654550 and ABIN2844261) western blot analysis in A549 cell line lysates (35 µg/lane). This demonstrates the GTPBP8 antibody detected the GTPBP8 protein (arrow).

Immunohistochemistry (Paraffin-embedded Sections)

Image 3. GTPBP8 Antibody (Center) (ABIN654550 and ABIN2844261) immunohistochemistry analysis in formalin fixed and paraffin embedded human brain tissue followed by peroxidase conjugation of the secondary antibody and DAB staining. This data demonstrates the use of the GTPBP8 Antibody (Center) for immunohistochemistry. Clinical relevance has not been evaluated.