

Datasheet for ABIN654556
anti-JOSD2 antibody (N-Term)[Go to Product page](#)

2 Images

Overview

Quantity:	400 µL
Target:	JOSD2
Binding Specificity:	AA 33-61, N-Term
Reactivity:	Human
Host:	Rabbit
Clonality:	Polyclonal
Conjugate:	This JOSD2 antibody is un-conjugated
Application:	Western Blotting (WB), Flow Cytometry (FACS)

Product Details

Immunogen:	This JOSD2 antibody is generated from rabbits immunized with a KLH conjugated synthetic peptide between 33-61 amino acids from the N-terminal region of human JOSD2.
Clone:	RB27927
Isotype:	Ig Fraction
Predicted Reactivity:	M
Purification:	This antibody is purified through a protein A column, followed by peptide affinity purification.

Target Details

Target:	JOSD2
Alternative Name:	JOSD2 (JOSD2 Products)

Target Details

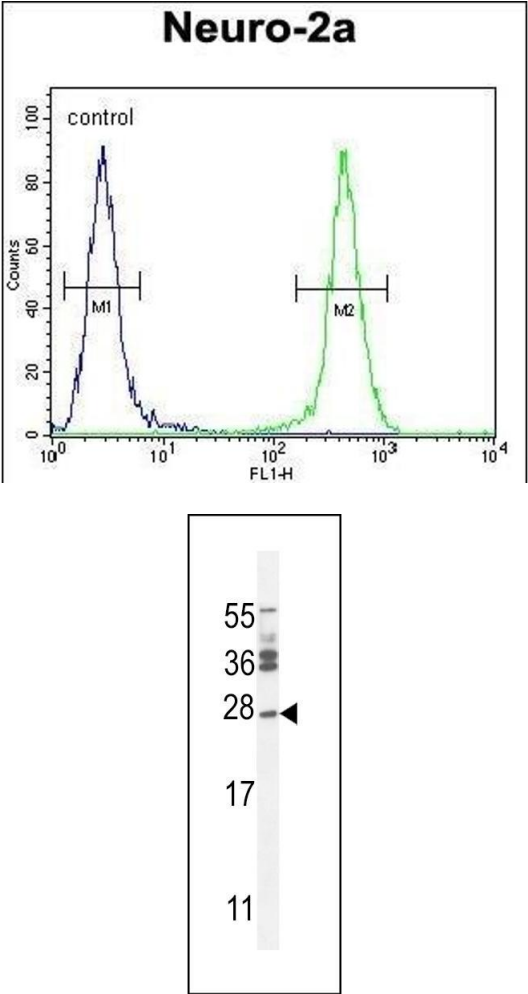
Background:	The specific function of Josephin-2 is not yet known.
Molecular Weight:	20756
Gene ID:	126119
NCBI Accession:	NP_001257568 , NP_001257569 , NP_001257570 , NP_001257615 , NP_612207
UniProt:	Q8TAC2

Application Details

Application Notes:	WB: 1:1000. FC: 1:10~50
Restrictions:	For Research Use only

Handling

Format:	Liquid
Buffer:	Purified polyclonal antibody supplied in PBS with 0.09 % (W/V) sodium azide.
Preservative:	Sodium azide
Precaution of Use:	This product contains Sodium azide: a POISONOUS AND HAZARDOUS SUBSTANCE which should be handled by trained staff only.
Storage:	4 °C,-20 °C
Storage Comment:	Maintain refrigerated at 2-8 °C for up to 6 months. For long term storage store at -20 °C in small aliquots to prevent freeze-thaw cycles.
Expiry Date:	6 months



Flow Cytometry

Image 1. JOSD2 Antibody (N-term) (ABIN654556 and ABIN2844263) flow cytometric analysis of Neuro-2a cells (right histogram) compared to a negative control cell (left histogram). FITC-conjugated goat-anti-rabbit secondary antibodies were used for the analysis.

Western Blotting

Image 2. Western blot analysis of lysates from HT-1080, A549 cell line (from left to right), using JOSD2 Antibody (N-term) (ABIN654556 and ABIN2844263). (ABIN654556 and ABIN2844263) was diluted at 1:1000 at each lane. A goat anti-rabbit IgG H&L(HRP) at 1:5000 dilution was used as the secondary antibody. Lysates at 35 µg per lane.