

Datasheet for ABIN654557  
**anti-SPIRE2 antibody (AA 285-313)**[Go to Product page](#)

## 1 Image

## Overview

Quantity:	400 µL
Target:	SPIRE2
Binding Specificity:	AA 285-313
Reactivity:	Human, Mouse
Host:	Rabbit
Clonality:	Polyclonal
Conjugate:	This SPIRE2 antibody is un-conjugated
Application:	Western Blotting (WB)

## Product Details

Immunogen:	This SPIRE2 antibody is generated from rabbits immunized with a KLH conjugated synthetic peptide between 285-313 amino acids from the Central region of human SPIRE2.
Clone:	RB28297
Isotype:	Ig Fraction
Purification:	This antibody is purified through a protein A column, followed by peptide affinity purification.

## Target Details

Target:	SPIRE2
Alternative Name:	SPIRE2 ( <a href="#">SPIRE2 Products</a> )
Background:	Acts as a actin nucleation factor, remains associated with the slow-growing pointed end of the

## Target Details

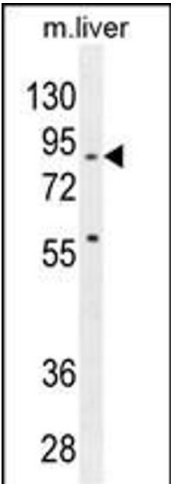
	new filament. Involved in vesicle transport processes providing a novel link between actin organization and intracellular transport (By similarity).
Molecular Weight:	79671
Gene ID:	84501
NCBI Accession:	<a href="#">NP_115827</a>
UniProt:	<a href="#">Q8WWL2</a>

## Application Details

Application Notes:	WB: 1:1000
Restrictions:	For Research Use only

## Handling

Format:	Liquid
Buffer:	Purified polyclonal antibody supplied in PBS with 0.09 % (W/V) sodium azide.
Preservative:	Sodium azide
Precaution of Use:	This product contains Sodium azide: a POISONOUS AND HAZARDOUS SUBSTANCE which should be handled by trained staff only.
Storage:	4 °C,-20 °C
Storage Comment:	Maintain refrigerated at 2-8 °C for up to 6 months. For long term storage store at -20 °C in small aliquots to prevent freeze-thaw cycles.
Expiry Date:	6 months



Western Blotting

**Image 1.** SPIRE2 Antibody (Center) (ABIN654557 and ABIN2844264) western blot analysis in mouse liver tissue lysates (35 µg/lane). This demonstrates the SPIRE2 antibody detected the SPIRE2 protein (arrow).