

Datasheet for ABIN654558
anti-ZSWIM1 antibody (C-Term)[Go to Product page](#)

2 Images

Overview

Quantity:	400 µL
Target:	ZSWIM1
Binding Specificity:	AA 443-471, C-Term
Reactivity:	Human
Host:	Rabbit
Clonality:	Polyclonal
Conjugate:	This ZSWIM1 antibody is un-conjugated
Application:	Western Blotting (WB), Immunohistochemistry (Paraffin-embedded Sections) (IHC (p))

Product Details

Immunogen:	This ZSWIM1 antibody is generated from rabbits immunized with a KLH conjugated synthetic peptide between 443-471 amino acids from the C-terminal region of human ZSWIM1.
Clone:	RB27928
Isotype:	Ig Fraction
Purification:	This antibody is purified through a protein A column, followed by peptide affinity purification.

Target Details

Target:	ZSWIM1
Alternative Name:	ZSWIM1 (ZSWIM1 Products)
Molecular Weight:	55071

Target Details

Gene ID:	90204
NCBI Accession:	NP_542170
UniProt:	Q9BR11

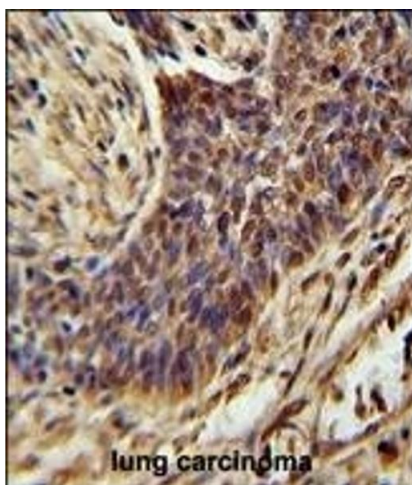
Application Details

Application Notes:	WB: 1:1000. IHC-P: 1:50~100
Restrictions:	For Research Use only

Handling

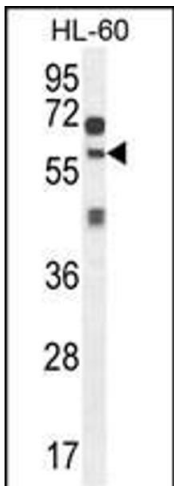
Format:	Liquid
Buffer:	Purified polyclonal antibody supplied in PBS with 0.09 % (W/V) sodium azide.
Preservative:	Sodium azide
Precaution of Use:	This product contains Sodium azide: a POISONOUS AND HAZARDOUS SUBSTANCE which should be handled by trained staff only.
Storage:	4 °C,-20 °C
Storage Comment:	Maintain refrigerated at 2-8 °C for up to 6 months. For long term storage store at -20 °C in small aliquots to prevent freeze-thaw cycles.
Expiry Date:	6 months

Images



Immunohistochemistry (Paraffin-embedded Sections)

Image 1. ZSWIM1 Antibody (C-term) (ABIN654558 and ABIN2844265) immunohistochemistry analysis in formalin fixed and paraffin embedded human lung carcinoma followed by peroxidase conjugation of the secondary antibody and DAB staining. This data demonstrates the use of the ZSWIM1 Antibody (C-term) for immunohistochemistry. Clinical relevance has not been evaluated.



Western Blotting

Image 2. ZSWIM1 Antibody (C-term) (ABIN654558 and ABIN2844265) western blot analysis in HL-60 cell line lysates (35 µg/lane). This demonstrates the ZSWIM1 antibody detected the ZSWIM1 protein (arrow).