

Datasheet for ABIN654563
anti-ZFP30 antibody (N-Term)[Go to Product page](#)

3 Images

Overview

Quantity:	400 µL
Target:	ZFP30
Binding Specificity:	AA 1-30, N-Term
Reactivity:	Human
Host:	Rabbit
Clonality:	Polyclonal
Conjugate:	This ZFP30 antibody is un-conjugated
Application:	Western Blotting (WB), Flow Cytometry (FACS), Immunohistochemistry (Paraffin-embedded Sections) (IHC (p))

Product Details

Immunogen:	This ZNF30 antibody is generated from rabbits immunized with a KLH conjugated synthetic peptide between 1-30 amino acids from the N-terminal region of human ZNF30.
Clone:	RB28323
Isotype:	Ig Fraction
Purification:	This antibody is purified through a protein A column, followed by peptide affinity purification.

Target Details

Target:	ZFP30
Alternative Name:	ZNF30 (ZFP30 Products)

Target Details

Background:	May be involved in transcriptional regulation.
Molecular Weight:	71417
NCBI Accession:	NP_001092907 , NP_001092908 , NP_919306
UniProt:	P17039

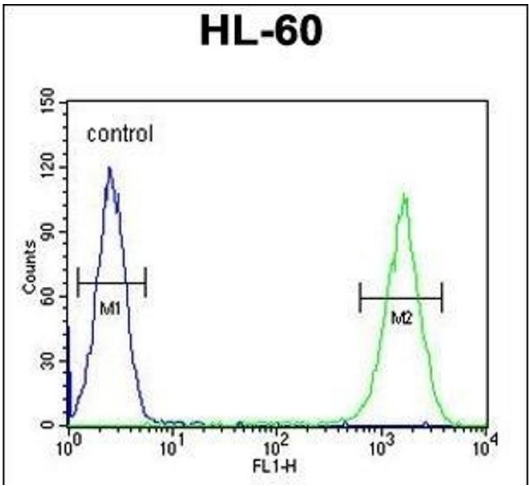
Application Details

Application Notes:	WB: 1:1000. IHC-P: 1:50~100. FC: 1:10~50
Restrictions:	For Research Use only

Handling

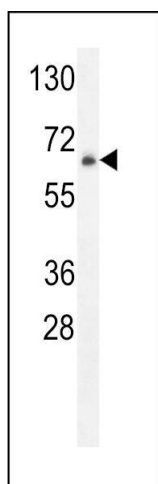
Format:	Liquid
Buffer:	Purified polyclonal antibody supplied in PBS with 0.09 % (W/V) sodium azide.
Preservative:	Sodium azide
Precaution of Use:	This product contains Sodium azide: a POISONOUS AND HAZARDOUS SUBSTANCE which should be handled by trained staff only.
Storage:	4 °C,-20 °C
Storage Comment:	Maintain refrigerated at 2-8 °C for up to 6 months. For long term storage store at -20 °C in small aliquots to prevent freeze-thaw cycles.
Expiry Date:	6 months

Images



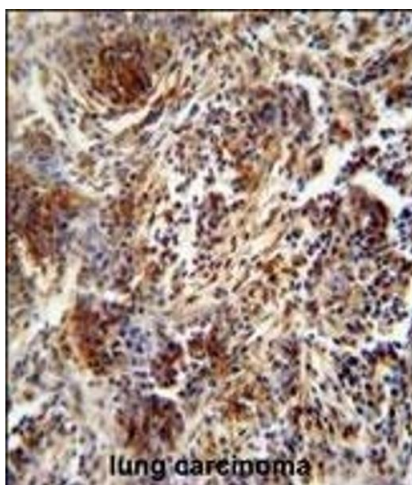
Flow Cytometry

Image 1. ZNF30 Antibody (N-term) (ABIN654563 and ABIN2844269) flow cytometric analysis of HL-60 cells (right histogram) compared to a negative control cell (left histogram).FITC-conjugated goat-anti-rabbit secondary antibodies were used for the analysis.



Western Blotting

Image 2. ZNF30 Antibody (N-term) (ABIN654563 and ABIN2844269) western blot analysis in HL-60 cell line lysates (35 µg/lane). This demonstrates the ZNF30 antibody detected the ZNF30 protein (arrow).



Immunohistochemistry (Paraffin-embedded Sections)

Image 3. ZNF30 antibody (N-term) (ABIN654563 and ABIN2844269) immunohistochemistry analysis in formalin fixed and paraffin embedded human lung carcinoma followed by peroxidase conjugation of the secondary antibody and DAB staining. This data demonstrates the use of the ZNF30 antibody (N-term) for immunohistochemistry. Clinical relevance has not been evaluated.