



Datasheet for ABIN654566
anti-CCDC148 antibody (AA 279-307)



[Go to Product page](#)

3 Images

Overview

Quantity:	400 µL
Target:	CCDC148
Binding Specificity:	AA 279-307
Reactivity:	Human, Mouse
Host:	Rabbit
Clonality:	Polyclonal
Conjugate:	This CCDC148 antibody is un-conjugated
Application:	Western Blotting (WB), Flow Cytometry (FACS)

Product Details

Immunogen:	This CCDC148 antibody is generated from rabbits immunized with a KLH conjugated synthetic peptide between 279-307 amino acids from the Central region of human CCDC148.
Clone:	RB28328
Isotype:	Ig Fraction
Purification:	This antibody is purified through a protein A column, followed by peptide affinity purification.

Target Details

Target:	CCDC148
Alternative Name:	CCDC148 (CCDC148 Products)
Background:	There are three different isoforms.

Target Details

Molecular Weight:	71076
Gene ID:	130940
NCBI Accession:	NP_001165108 , NP_620158
UniProt:	Q8NFR7

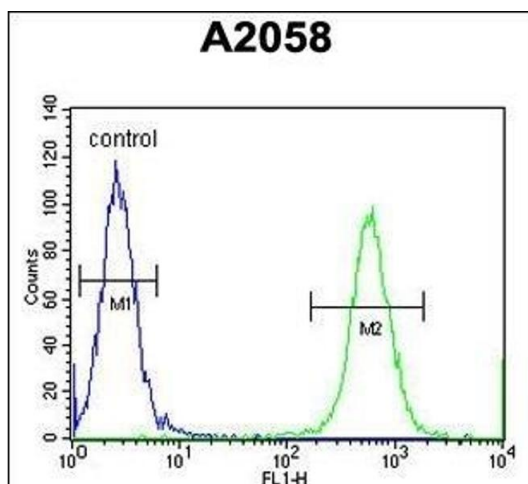
Application Details

Application Notes:	WB: 1:1000. WB: 1:1000. FC: 1:10~50
Restrictions:	For Research Use only

Handling

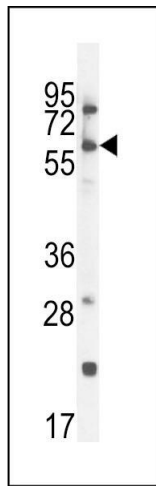
Format:	Liquid
Buffer:	Purified polyclonal antibody supplied in PBS with 0.09 % (W/V) sodium azide.
Preservative:	Sodium azide
Precaution of Use:	This product contains Sodium azide: a POISONOUS AND HAZARDOUS SUBSTANCE which should be handled by trained staff only.
Storage:	4 °C, -20 °C
Storage Comment:	Maintain refrigerated at 2-8 °C for up to 6 months. For long term storage store at -20 °C in small aliquots to prevent freeze-thaw cycles.
Expiry Date:	6 months

Images



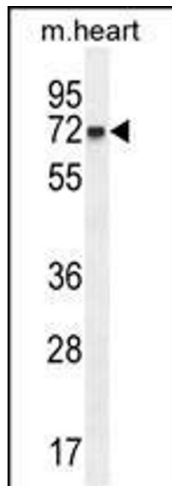
Flow Cytometry

Image 1. CCD Antibody (Center) (ABIN654566 and ABIN2844272) flow cytometric analysis of cells (right histogram) compared to a negative control cell (left histogram). FITC-conjugated goat-anti-rabbit secondary antibodies were used for the analysis.



Western Blotting

Image 2. CCD Antibody (Center) (ABIN654566 and ABIN2844272) western blot analysis in cell line lysates (35 μ g/lane). This demonstrates the CCD antibody detected the CCD protein (arrow).



Western Blotting

Image 3. CCD Antibody (Center) (ABIN654566 and ABIN2844272) western blot analysis in mouse heart tissue lysates (35 μ g/lane). This demonstrates the CCD antibody detected the CCD protein (arrow).