

Datasheet for ABIN654572
anti-LACE1 antibody (N-Term)[Go to Product page](#)

1 Image

Overview

Quantity:	400 µL
Target:	LACE1
Binding Specificity:	AA 68-96, N-Term
Reactivity:	Human
Host:	Rabbit
Clonality:	Polyclonal
Conjugate:	This LACE1 antibody is un-conjugated
Application:	Western Blotting (WB)

Product Details

Immunogen:	This LACE1 antibody is generated from rabbits immunized with a KLH conjugated synthetic peptide between 68-96 amino acids from the N-terminal region of human LACE1.
Clone:	RB28350
Isotype:	Ig Fraction
Purification:	This antibody is purified through a protein A column, followed by peptide affinity purification.

Target Details

Target:	LACE1
Alternative Name:	LACE1 (LACE1 Products)
Background:	LACE1 encodes a protein with possible ATPase function. The protein contains a P-loop motif

Target Details

and a five-domain structure that is conserved in fly, yeast, and bacteria. Two conserved estrogen receptor binding sites are located within 2.5 kb of this gene.

Molecular Weight: 54845

Gene ID: 246269

NCBI Accession: [NP_660358](#)

UniProt: [Q8WV93](#)

Application Details

Application Notes: WB: 1:1000

Restrictions: For Research Use only

Handling

Format: Liquid

Buffer: Purified polyclonal antibody supplied in PBS with 0.09 % (W/V) sodium azide.

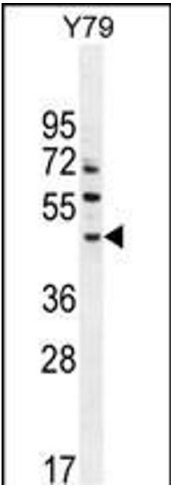
Preservative: Sodium azide

Precaution of Use: This product contains Sodium azide: a POISONOUS AND HAZARDOUS SUBSTANCE which should be handled by trained staff only.

Storage: 4 °C, -20 °C

Storage Comment: Maintain refrigerated at 2-8 °C for up to 6 months. For long term storage store at -20 °C in small aliquots to prevent freeze-thaw cycles.

Expiry Date: 6 months



Western Blotting

Image 1. LACE1 Antibody (N-term) (ABIN654572 and ABIN2844276) western blot analysis in Y79 cell line lysates (35 µg/lane). This demonstrates the LACE1 antibody detected the LACE1 protein (arrow).