



[Go to Product page](#)

Datasheet for ABIN654574
anti-PURG antibody (C-Term)

2 Images

Overview

Quantity:	400 µL
Target:	PURG
Binding Specificity:	AA 225-253, C-Term
Reactivity:	Human
Host:	Rabbit
Clonality:	Polyclonal
Conjugate:	This PURG antibody is un-conjugated
Application:	Western Blotting (WB), Flow Cytometry (FACS)

Product Details

Immunogen:	This PURG antibody is generated from rabbits immunized with a KLH conjugated synthetic peptide between 225-253 amino acids from the C-terminal region of human PURG.
Clone:	RB28354
Isotype:	Ig Fraction
Purification:	This antibody is purified through a protein A column, followed by peptide affinity purification.

Target Details

Target:	PURG
Alternative Name:	PURG (PURG Products)
Background:	The exact function of this gene is not known, however, its encoded product is highly similar to

Target Details

purine-rich element binding protein A. The latter is a DNA-binding protein which binds preferentially to the single strand of the purine-rich element termed PUR, and has been implicated in the control of both DNA replication and transcription. PURG lies in close proximity to the Werner syndrome gene, but on the opposite strand, on chromosome 8p11. Two transcript variants encoding different isoforms have been found for this gene.

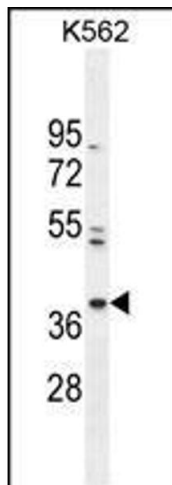
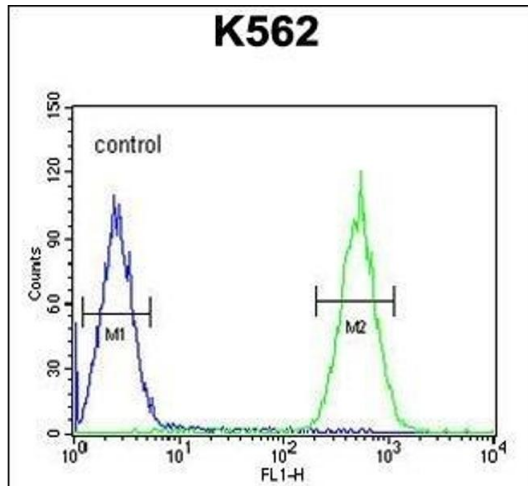
Molecular Weight:	39556
Gene ID:	29942
NCBI Accession:	NP_001015508 , NP_037489
UniProt:	Q9UJV8

Application Details

Application Notes:	WB: 1:1000. FC: 1:10~50
Restrictions:	For Research Use only

Handling

Format:	Liquid
Buffer:	Purified polyclonal antibody supplied in PBS with 0.09 % (W/V) sodium azide.
Preservative:	Sodium azide
Precaution of Use:	This product contains Sodium azide: a POISONOUS AND HAZARDOUS SUBSTANCE which should be handled by trained staff only.
Storage:	4 °C,-20 °C
Storage Comment:	Maintain refrigerated at 2-8 °C for up to 6 months. For long term storage store at -20 °C in small aliquots to prevent freeze-thaw cycles.
Expiry Date:	6 months



Flow Cytometry

Image 1. PURG Antibody (C-term) (ABIN654574 and ABIN2844278) flow cytometric analysis of K562 cells (right histogram) compared to a negative control cell (left histogram). FITC-conjugated goat-anti-rabbit secondary antibodies were used for the analysis.

Western Blotting

Image 2. PURG Antibody (C-term) (ABIN654574 and ABIN2844278) western blot analysis in K562 cell line lysates (35 µg/lane). This demonstrates the PURG antibody detected the PURG protein (arrow).