



[Go to Product page](#)

Datasheet for ABIN654576  
**anti-DCAF4L2 antibody (N-Term)**

3 Images

### Overview

Quantity:	400 µL
Target:	DCAF4L2
Binding Specificity:	AA 1-30, N-Term
Reactivity:	Human
Host:	Rabbit
Clonality:	Polyclonal
Conjugate:	This DCAF4L2 antibody is un-conjugated
Application:	Western Blotting (WB), Flow Cytometry (FACS), Immunohistochemistry (Paraffin-embedded Sections) (IHC (p))

### Product Details

Immunogen:	This WDR21C antibody is generated from rabbits immunized with a KLH conjugated synthetic peptide between 1-30 amino acids from the N-terminal region of human WDR21C.
Clone:	RB28363
Isotype:	Ig Fraction
Purification:	This antibody is purified through a protein A column, followed by peptide affinity purification.

### Target Details

Target:	DCAF4L2
Alternative Name:	WDR21C ( <a href="#">DCAF4L2 Products</a> )

## Target Details

Molecular Weight:	43747
Gene ID:	138009
NCBI Accession:	<a href="#">NP_689631</a>
UniProt:	<a href="#">Q8NA75</a>

## Application Details

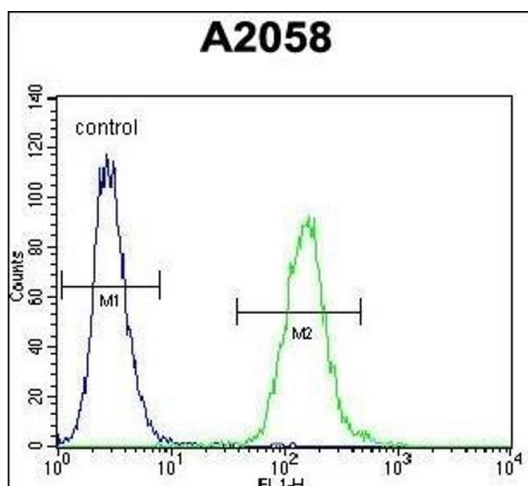
Application Notes: WB: 1:1000. IHC-P: 1:50~100. FC: 1:10~50

Restrictions: For Research Use only

## Handling

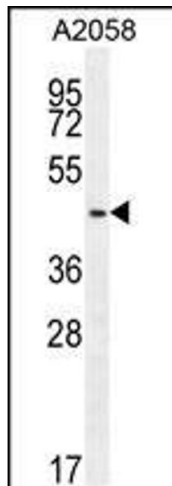
Format:	Liquid
Buffer:	Purified polyclonal antibody supplied in PBS with 0.09 % (W/V) sodium azide.
Preservative:	Sodium azide
Precaution of Use:	This product contains Sodium azide: a POISONOUS AND HAZARDOUS SUBSTANCE which should be handled by trained staff only.
Storage:	4 °C,-20 °C
Storage Comment:	Maintain refrigerated at 2-8 °C for up to 6 months. For long term storage store at -20 °C in small aliquots to prevent freeze-thaw cycles.
Expiry Date:	6 months

## Validation report #103541 for Western Blotting (WB)



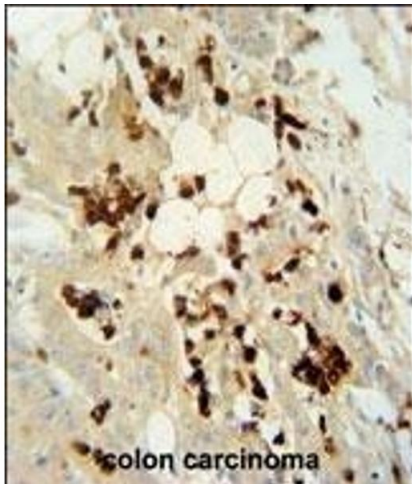
### Flow Cytometry

**Image 1.** WDR21C Antibody (N-term) (ABIN654576 and ABIN2844279) flow cytometric analysis of cells (right histogram) compared to a negative control cell (left histogram). FITC-conjugated goat-anti-rabbit secondary antibodies were used for the analysis.



### Western Blotting

**Image 2.** WDR21C Antibody (N-term) (ABIN654576 and ABIN2844279) western blot analysis in cell line lysates (35  $\mu$ g/lane). This demonstrates the WDR21C antibody detected the WDR21C protein (arrow).



### Immunohistochemistry (Paraffin-embedded Sections)

**Image 3.** WDR21C antibody (N-term) (ABIN654576 and ABIN2844279) immunohistochemistry analysis in formalin fixed and paraffin embedded human colon carcinoma followed by peroxidase conjugation of the secondary antibody and DAB staining. This data demonstrates the use of the WDR21C antibody (N-term) for immunohistochemistry. Clinical relevance has not been evaluated.