



[Go to Product page](#)

Datasheet for ABIN654582

anti-CCDC37 antibody (N-Term)

1 Image

Overview

Quantity:	400 µL
Target:	CCDC37
Binding Specificity:	AA 16-45, N-Term
Reactivity:	Human
Host:	Rabbit
Clonality:	Polyclonal
Conjugate:	This CCDC37 antibody is un-conjugated
Application:	Western Blotting (WB)

Product Details

Immunogen:	This CCDC37 antibody is generated from rabbits immunized with a KLH conjugated synthetic peptide between 16-45 amino acids from the N-terminal region of human CCDC37.
Clone:	RB28388
Isotype:	Ig Fraction
Purification:	This antibody is purified through a protein A column, followed by peptide affinity purification.

Target Details

Target:	CCDC37
Alternative Name:	CCDC37 (CCDC37 Products)
Molecular Weight:	71117

Target Details

Gene ID: 348807

NCBI Accession: [NP_872434](#)

UniProt: [Q494V2](#)

Application Details

Application Notes: WB: 1:1000

Restrictions: For Research Use only

Handling

Format: Liquid

Buffer: Purified polyclonal antibody supplied in PBS with 0.09 % (W/V) sodium azide.

Preservative: Sodium azide

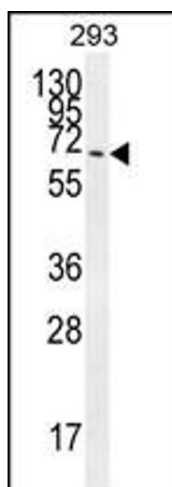
Precaution of Use: This product contains Sodium azide: a POISONOUS AND HAZARDOUS SUBSTANCE which should be handled by trained staff only.

Storage: 4 °C, -20 °C

Storage Comment: Maintain refrigerated at 2-8 °C for up to 6 months. For long term storage store at -20 °C in small aliquots to prevent freeze-thaw cycles.

Expiry Date: 6 months

Images



Western Blotting

Image 1. CCDC37 Antibody (N-term) (ABIN654582 and ABIN2844284) western blot analysis in 293 cell line lysates (35 µg/lane). This demonstrates the CCDC37 antibody detected the CCDC37 protein (arrow).