

Datasheet for ABIN654583
anti-S100Z antibody (N-Term)[Go to Product page](#)

2 Images

Overview

Quantity:	400 µL
Target:	S100Z
Binding Specificity:	AA 1-30, N-Term
Reactivity:	Human, Mouse
Host:	Rabbit
Clonality:	Polyclonal
Conjugate:	This S100Z antibody is un-conjugated
Application:	Western Blotting (WB), Flow Cytometry (FACS)

Product Details

Immunogen:	This S100Z antibody is generated from rabbits immunized with a KLH conjugated synthetic peptide between 1-30 amino acids from the N-terminal region of human S100Z.
Clone:	RB28400
Isotype:	Ig Fraction
Purification:	This antibody is purified through a protein A column, followed by peptide affinity purification.

Target Details

Target:	S100Z
Alternative Name:	S100Z (S100Z Products)
Background:	Members of the S100 protein family contain 2 calcium-binding EF-hands and exhibit cell-type

Target Details

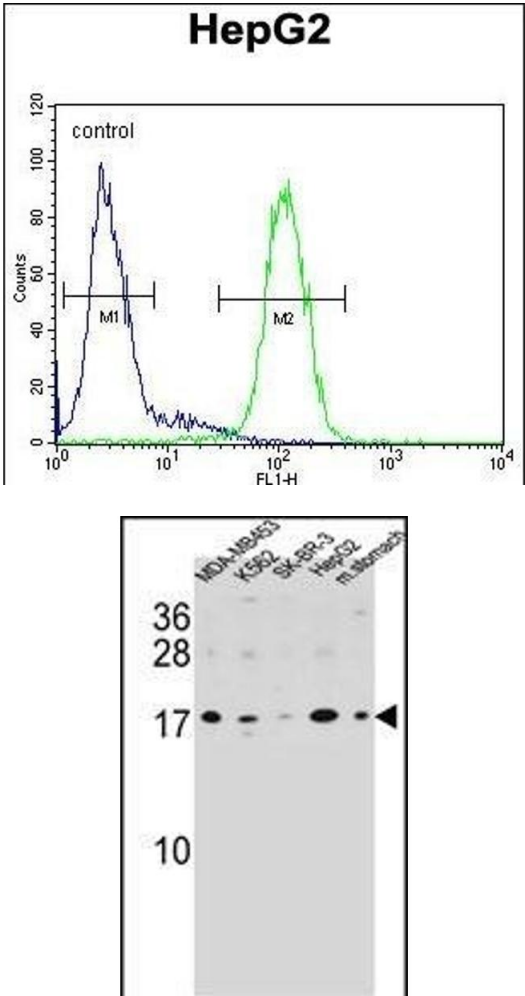
	specific expression patterns. For additional background information on S100 proteins, see MIM 114085.
Molecular Weight:	11620
Gene ID:	170591
NCBI Accession:	NP_570128
UniProt:	Q8WVG8
Pathways:	S100 Proteins

Application Details

Application Notes:	WB: 1:1000. FC: 1:10~50
Restrictions:	For Research Use only

Handling

Format:	Liquid
Buffer:	Purified polyclonal antibody supplied in PBS with 0.09 % (W/V) sodium azide.
Preservative:	Sodium azide
Precaution of Use:	This product contains Sodium azide: a POISONOUS AND HAZARDOUS SUBSTANCE which should be handled by trained staff only.
Storage:	4 °C, -20 °C
Storage Comment:	Maintain refrigerated at 2-8 °C for up to 6 months. For long term storage store at -20 °C in small aliquots to prevent freeze-thaw cycles.
Expiry Date:	6 months



Flow Cytometry

Image 1. S100Z Antibody (N-term) (ABIN654583 and ABIN2844285) flow cytometric analysis of HepG2 cells (right histogram) compared to a negative control cell (left histogram).FITC-conjugated goat-anti-rabbit secondary antibodies were used for the analysis.

Western Blotting

Image 2. S100Z Antibody (N-term) (ABIN654583 and ABIN2844285) western blot analysis in MDA-M,K562,SK-BR-3,HepG2 cell line and mouse stomach tissue lysates (35 μ g/lane).This demonstrates the S100Z antibody detected the S100Z protein (arrow).