



[Go to Product page](#)

Datasheet for ABIN654590

## anti-ZSWIM6 antibody (C-Term)

### 3 Images

#### Overview

Quantity:	400 µL
Target:	ZSWIM6
Binding Specificity:	AA 1148-1177, C-Term
Reactivity:	Human
Host:	Rabbit
Clonality:	Polyclonal
Conjugate:	This ZSWIM6 antibody is un-conjugated
Application:	Western Blotting (WB), Flow Cytometry (FACS), Immunohistochemistry (Paraffin-embedded Sections) (IHC (p))

#### Product Details

Immunogen:	This ZSWIM6 antibody is generated from rabbits immunized with a KLH conjugated synthetic peptide between 1148-1177 amino acids from the C-terminal region of human ZSWIM6.
Clone:	RB28498
Isotype:	Ig Fraction
Predicted Reactivity:	M
Purification:	This antibody is purified through a protein A column, followed by peptide affinity purification.

#### Target Details

Target:	ZSWIM6
---------	--------

## Target Details

---

Alternative Name: ZSWIM6 ([ZSWIM6 Products](#))

Molecular Weight: 133470

Gene ID: 57688

NCBI Accession: [NP\\_065979](#)

UniProt: [Q9HCJ5](#)

## Application Details

---

Application Notes: WB: 1:1000. IHC-P: 1:50~100. FC: 1:10~50

Restrictions: For Research Use only

## Handling

---

Format: Liquid

Buffer: Purified polyclonal antibody supplied in PBS with 0.09 % (W/V) sodium azide.

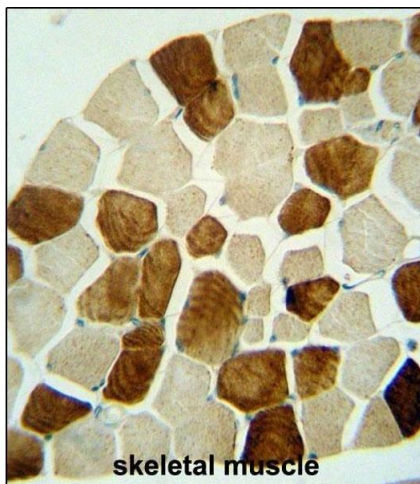
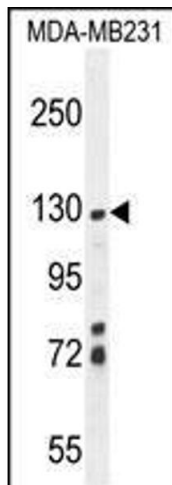
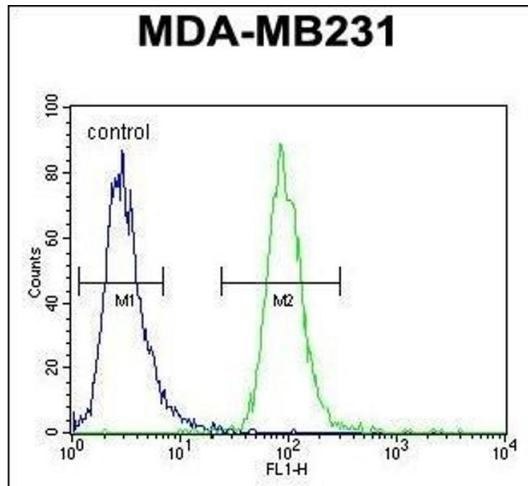
Preservative: Sodium azide

Precaution of Use: This product contains Sodium azide: a POISONOUS AND HAZARDOUS SUBSTANCE which should be handled by trained staff only.

Storage: 4 °C, -20 °C

Storage Comment: Maintain refrigerated at 2-8 °C for up to 6 months. For long term storage store at -20 °C in small aliquots to prevent freeze-thaw cycles.

Expiry Date: 6 months



### Flow Cytometry

**Image 1.** ZSWIM6 Antibody (C-term) (ABIN654590 and ABIN2844290) flow cytometric analysis of MDA-M cells (right histogram) compared to a negative control cell (left histogram). FITC-conjugated goat-anti-rabbit secondary antibodies were used for the analysis.

### Western Blotting

**Image 2.** ZSWIM6 Antibody (C-term) (ABIN654590 and ABIN2844290) western blot analysis in MDA-M cell line lysates (35 µg/lane). This demonstrates the ZSWIM6 antibody detected the ZSWIM6 protein (arrow).

### Immunohistochemistry (Paraffin-embedded Sections)

**Image 3.** ZSWIM6 antibody (C-term) (ABIN654590 and ABIN2844290) immunohistochemistry analysis in formalin fixed and paraffin embedded human skeletal muscle followed by peroxidase conjugation of the secondary antibody and DAB staining. This data demonstrates the use of the ZSWIM6 antibody (C-term) for immunohistochemistry. Clinical relevance has not been evaluated.