

Datasheet for ABIN654598
anti-PCOTH antibody (AA 14-42)[Go to Product page](#)

3 Images

Overview

| | |
|----------------------|---|
| Quantity: | 400 µL |
| Target: | PCOTH (C1QTNF9B-AS1) |
| Binding Specificity: | AA 14-42 |
| Reactivity: | Human |
| Host: | Rabbit |
| Clonality: | Polyclonal |
| Conjugate: | This PCOTH antibody is un-conjugated |
| Application: | Western Blotting (WB), Flow Cytometry (FACS), Immunohistochemistry (Paraffin-embedded Sections) (IHC (p)) |

Product Details

| | |
|---------------|---|
| Immunogen: | This PCOTH antibody is generated from rabbits immunized with a KLH conjugated synthetic peptide between 14-42 amino acids from the Central region of human PCOTH. |
| Clone: | RB28580 |
| Isotype: | Ig Fraction |
| Purification: | This antibody is purified through a protein A column, followed by peptide affinity purification. |

Target Details

| | |
|-------------------|---|
| Target: | PCOTH (C1QTNF9B-AS1) |
| Alternative Name: | PCOTH (C1QTNF9B-AS1 Products) |

Target Details

| | |
|-----------------|--|
| Background: | May be involved in growth and survival of prostate cancer cells through the TAF-Ibeta pathway. |
| Gene ID: | 542767 |
| NCBI Accession: | NP_001014442 |
| UniProt: | Q58A44 |

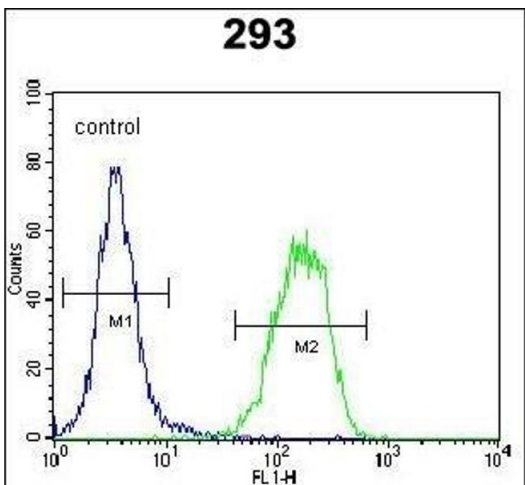
Application Details

| | |
|--------------------|--|
| Application Notes: | WB: 1:1000. IHC-P: 1:50~100. FC: 1:10~50 |
| Restrictions: | For Research Use only |

Handling

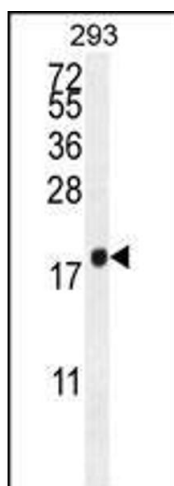
| | |
|--------------------|--|
| Format: | Liquid |
| Buffer: | Purified polyclonal antibody supplied in PBS with 0.09 % (W/V) sodium azide. |
| Preservative: | Sodium azide |
| Precaution of Use: | This product contains Sodium azide: a POISONOUS AND HAZARDOUS SUBSTANCE which should be handled by trained staff only. |
| Storage: | 4 °C,-20 °C |
| Storage Comment: | Maintain refrigerated at 2-8 °C for up to 6 months. For long term storage store at -20 °C in small aliquots to prevent freeze-thaw cycles. |
| Expiry Date: | 6 months |

Images



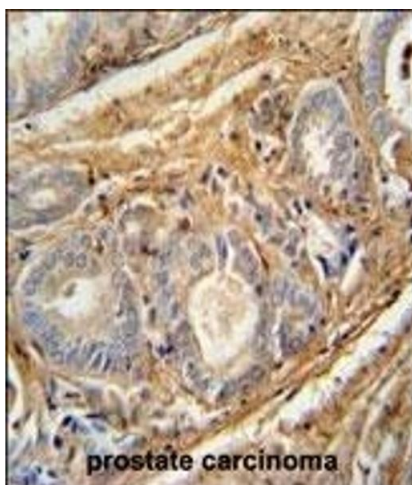
Flow Cytometry

Image 1. PCOTH Antibody (Center) (ABIN654598 and ABIN2844298) flow cytometric analysis of 293 cells (right histogram) compared to a negative control cell (left histogram). FITC-conjugated goat-anti-rabbit secondary antibodies were used for the analysis.



Western Blotting

Image 2. PCOTH Antibody (Center) (ABIN654598 and ABIN2844298) western blot analysis in 293 cell line lysates (35 µg/lane). This demonstrates the PCOTH antibody detected the PCOTH protein (arrow).



Immunohistochemistry (Paraffin-embedded Sections)

Image 3. PCOTH antibody (Center) (ABIN654598 and ABIN2844298) immunohistochemistry analysis in formalin fixed and paraffin embedded human prostate carcinoma followed by peroxidase conjugation of the secondary antibody and DAB staining. This data demonstrates the use of the PCOTH antibody (Center) for immunohistochemistry. Clinical relevance has not been evaluated.