



Datasheet for ABIN654605  
**anti-MAP1LC3A/B antibody (cleaved)**



[Go to Product page](#)

3 Images

### Overview

Quantity:	400 µL
Target:	MAP1LC3A/B
Binding Specificity:	AA 100-125, cleaved
Reactivity:	Human, Mouse
Host:	Rabbit
Clonality:	Polyclonal
Conjugate:	This MAP1LC3A/B antibody is un-conjugated
Application:	Immunohistochemistry (Paraffin-embedded Sections) (IHC (p)), Western Blotting (WB), Immunofluorescence (IF)

### Product Details

Immunogen:	This Cleaved-APG8a/b antibody is generated from rabbits immunized with a KLH conjugated synthetic peptide between 100-125 amino acids from human Cleaved-APG8a/b.
Clone:	RB28610
Isotype:	Ig Fraction
Predicted Reactivity:	B
Purification:	This antibody is purified through a protein A column, followed by peptide affinity purification.

### Target Details

Target:	MAP1LC3A/B
---------	------------

## Target Details

---

Alternative Name:	APG8a/b (MAP1LC3A/B) ( <a href="#">MAP1LC3A/B Products</a> )
Background:	The product of this gene is a subunit of neuronal microtubule-associated MAP1A and MAP1B proteins, which are involved in microtubule assembly and important for neurogenesis. Studies on the rat homolog implicate a role for this gene in autophagy, a process that involves the bulk degradation of cytoplasmic component.
Molecular Weight:	14688
Gene ID:	81631
NCBI Accession:	<a href="#">NP_073729</a>
UniProt:	<a href="#">Q9GZQ8</a>

## Application Details

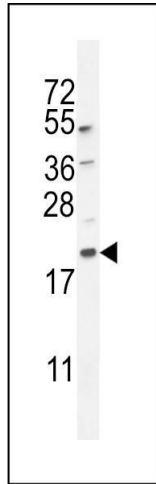
---

Application Notes:	IF: 1:100. WB: 1:1000. IHC-P: 1:50~100
Restrictions:	For Research Use only

## Handling

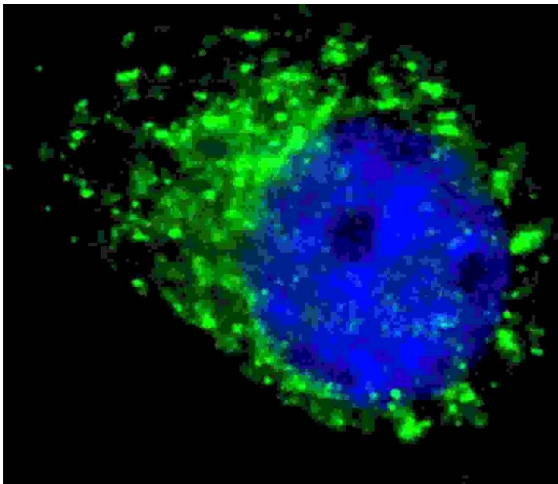
---

Format:	Liquid
Buffer:	Purified polyclonal antibody supplied in PBS with 0.09 % (W/V) sodium azide.
Preservative:	Sodium azide
Precaution of Use:	This product contains Sodium azide: a POISONOUS AND HAZARDOUS SUBSTANCE which should be handled by trained staff only.
Storage:	4 °C,-20 °C
Storage Comment:	Maintain refrigerated at 2-8 °C for up to 6 months. For long term storage store at -20 °C in small aliquots to prevent freeze-thaw cycles.
Expiry Date:	6 months



### Western Blotting

**Image 1.** G8a/b (M1LC3A/B) 10648a western blot analysis in mouse lung tissue lysates (35 µg/lane). This demonstrates the M1LC3A antibody detected the M1LC3A protein (arrow).



### Immunofluorescence

**Image 2.** Fluorescent image of cells stained with G8a/b (M1LC3A/B) antibody. Cells were treated with Chloroquine (50 µM, 16h), then fixed with 4% PFA (20 min), permeabilized with Triton X-100 (0.2%, 30 min). Cells were then incubated with 10648a G8a/b (M1LC3A/B) primary antibody (1:100, 2 h at room temperature). For secondary antibody, Alexa Fluor® 488 conjugated donkey anti-rabbit antibody (green) was used (1:1000, 1h). Nuclei were counterstained with Hoechst 33342 (blue) (10 µg/mL, 5 min). G8a/b (M1LC3A/B) immunoreactivity is localized to autophagic vacuoles in the cytoplasm of cells.



### Immunohistochemistry (Paraffin-embedded Sections)

**Image 3.** Cleaved-G8a/b antibody (M1LC3A/B) 10648a immunohistochemistry analysis in formalin fixed and paraffin embedded human skeletal muscle followed by peroxidase conjugation of the secondary antibody and DAB staining. This data demonstrates the use of the Cleaved-G8a/b antibody (M1LC3A/B) for immunohistochemistry. Clinical relevance has not been evaluated.