

Datasheet for ABIN654606  
**anti-BHLHA15 antibody (C-Term)**

3 Images



[Go to Product page](#)

Overview

Quantity:	400 µL
Target:	BHLHA15
Binding Specificity:	AA 160-189, C-Term
Reactivity:	Human, Mouse
Host:	Rabbit
Clonality:	Polyclonal
Conjugate:	This BHLHA15 antibody is un-conjugated
Application:	Western Blotting (WB), Flow Cytometry (FACS)

Product Details

Immunogen:	This BHLHA15 antibody is generated from rabbits immunized with a KLH conjugated synthetic peptide between 160-189 amino acids from the C-terminal region of human BHLHA15.
Clone:	RB28303
Isotype:	Ig Fraction
Purification:	This antibody is purified through a protein A column, followed by peptide affinity purification.

Target Details

Target:	BHLHA15
Alternative Name:	BHLHA15 ( <a href="#">BHLHA15 Products</a> )
Background:	Plays a role in controlling the transcriptional activity of MYOD1, ensuring that expanding

## Target Details

---

myoblast populations remain undifferentiated. Repression may occur through muscle-specific E-box occupancy by homodimers. May also negatively regulate bHLH-mediated transcription through an N-terminal repressor domain. Serves as a key regulator of acinar cell function, stability, and identity. Also required for normal organelle localization in exocrine cells and for mitochondrial calcium ion transport. May function as a unique regulator of gene expression in several different embryonic and postnatal cell lineages. Binds to the E-box consensus sequence 5'-CANNTG-3' (By similarity).

---

Molecular Weight: 20818

---

Gene ID: 168620

---

NCBI Accession: [NP\\_803238](#)

---

UniProt: [Q7RTS1](#)

## Application Details

---

Application Notes: WB: 1:1000. WB: 1:1000. FC: 1:10~50

---

Restrictions: For Research Use only

## Handling

---

Format: Liquid

---

Buffer: Purified polyclonal antibody supplied in PBS with 0.09 % (W/V) sodium azide.

---

Preservative: Sodium azide

---

Precaution of Use: This product contains Sodium azide: a POISONOUS AND HAZARDOUS SUBSTANCE which should be handled by trained staff only.

---

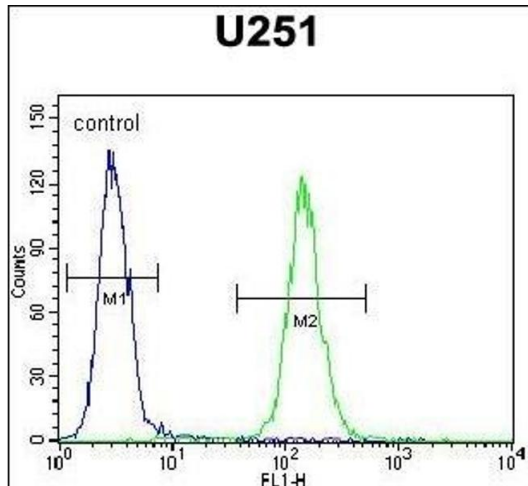
Storage: 4 °C,-20 °C

---

Storage Comment: Maintain refrigerated at 2-8 °C for up to 6 months. For long term storage store at -20 °C in small aliquots to prevent freeze-thaw cycles.

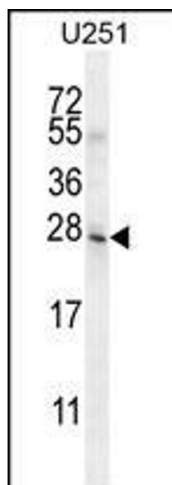
---

Expiry Date: 6 months



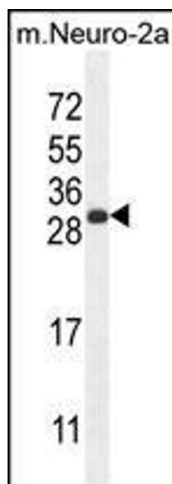
### Flow Cytometry

**Image 1.** BHLHA15 Antibody (C-term) (ABIN654606 and ABIN2844305) flow cytometric analysis of cells (right histogram) compared to a negative control cell (left histogram). FITC-conjugated goat-anti-rabbit secondary antibodies were used for the analysis.



### Western Blotting

**Image 2.** BHLHA15 Antibody (C-term) (ABIN654606 and ABIN2844305) western blot analysis in cell line lysates (35  $\mu$ g/lane). This demonstrates the BHLHA15 antibody detected the BHLHA15 protein (arrow).



### Western Blotting

**Image 3.** BHLHA15 Antibody (C-term) (ABIN654606 and ABIN2844305) western blot analysis in mouse Neuro-2a cell line lysates (35  $\mu$ g/lane). This demonstrates the BHLHA15 antibody detected the BHLHA15 protein (arrow).