

Datasheet for ABIN654614
anti-LRRC36 antibody (N-Term)



[Go to Product page](#)

1 Image

Overview

Quantity:	400 µL
Target:	LRRC36
Binding Specificity:	AA 88-117, N-Term
Reactivity:	Human, Mouse
Host:	Rabbit
Clonality:	Polyclonal
Conjugate:	This LRRC36 antibody is un-conjugated
Application:	Western Blotting (WB)

Product Details

Immunogen:	This LRRC36 antibody is generated from rabbits immunized with a KLH conjugated synthetic peptide between 88-117 amino acids from the N-terminal region of human LRRC36.
Clone:	RB30122
Isotype:	Ig Fraction
Purification:	This antibody is purified through a protein A column, followed by peptide affinity purification.

Target Details

Target:	LRRC36
Alternative Name:	LRRC36 (LRRC36 Products)
Molecular Weight:	83823

Target Details

Gene ID:	55282
NCBI Accession:	NP_001155047 , NP_060766
UniProt:	Q1X8D7

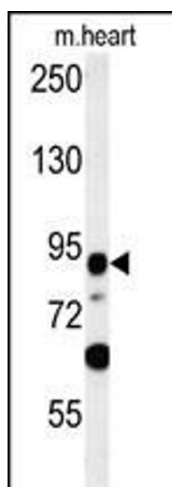
Application Details

Application Notes:	WB: 1:1000
Restrictions:	For Research Use only

Handling

Format:	Liquid
Buffer:	Purified polyclonal antibody supplied in PBS with 0.09 % (W/V) sodium azide.
Preservative:	Sodium azide
Precaution of Use:	This product contains Sodium azide: a POISONOUS AND HAZARDOUS SUBSTANCE which should be handled by trained staff only.
Storage:	4 °C, -20 °C
Storage Comment:	Maintain refrigerated at 2-8 °C for up to 6 months. For long term storage store at -20 °C in small aliquots to prevent freeze-thaw cycles.
Expiry Date:	6 months

Validation report #103541 for Western Blotting (WB)



Western Blotting

Image 1. LRRC36 Antibody (N-term) (ABIN654614 and ABIN2844314) western blot analysis in mouse heart tissue lysates (35 µg/lane). This demonstrates the LRRC36 antibody detected the LRRC36 protein (arrow).