

Datasheet for ABIN654618  
**anti-CES2 antibody (AA 340-369)**

6 Images

2 Publications

[Go to Product page](#)

## Overview

Quantity:	400 µL
Target:	CES2
Binding Specificity:	AA 340-369
Reactivity:	Human
Host:	Rabbit
Clonality:	Polyclonal
Conjugate:	This CES2 antibody is un-conjugated
Application:	Western Blotting (WB), Flow Cytometry (FACS), Immunohistochemistry (Paraffin-embedded Sections) (IHC (p))

## Product Details

Immunogen:	This CES2 antibody is generated from rabbits immunized with a KLH conjugated synthetic peptide between 340-369 amino acids from the Central region of human CES2.
Clone:	RB18998
Isotype:	Ig Fraction
Purification:	This antibody is purified through a protein A column, followed by peptide affinity purification.

## Target Details

Target:	CES2
Alternative Name:	CES2 ( <a href="#">CES2 Products</a> )

## Target Details

Background:	CES2 is a member of the carboxylesterase large family. The family members are responsible for the hydrolysis or transesterification of various xenobiotics, such as cocaine and heroin, and endogenous substrates with ester, thioester, or amide bonds. They may participate in fatty acyl and cholesterol ester metabolism, and may play a role in the blood-brain barrier system. The protein encoded by this gene is the major intestinal enzyme and functions in intestine drug clearance.
Molecular Weight:	61807
Gene ID:	8824
NCBI Accession:	<a href="#">NP_003860</a> , <a href="#">NP_932327</a>
UniProt:	<a href="#">O00748</a>

## Application Details

Application Notes:	WB: 1:1000. WB: 1:2000. WB: 1:2000. IHC-P: 1:50~100. FC: 1:25. FC: 1:25
Restrictions:	For Research Use only

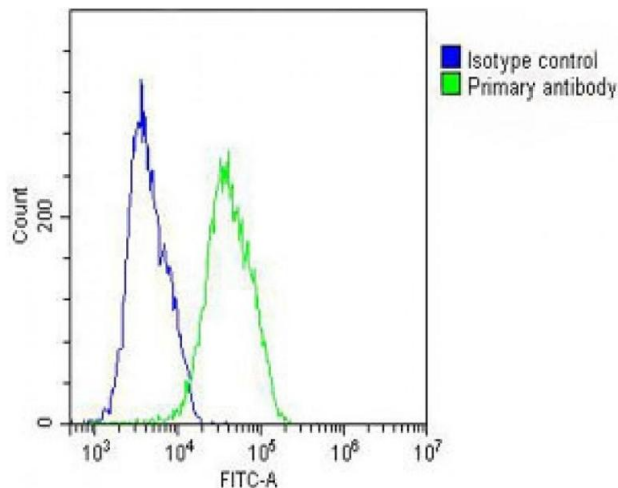
## Handling

Format:	Liquid
Buffer:	Purified polyclonal antibody supplied in PBS with 0.09 % (W/V) sodium azide.
Preservative:	Sodium azide
Precaution of Use:	This product contains Sodium azide: a POISONOUS AND HAZARDOUS SUBSTANCE which should be handled by trained staff only.
Storage:	4 °C, -20 °C
Storage Comment:	Maintain refrigerated at 2-8 °C for up to 6 months. For long term storage store at -20 °C in small aliquots to prevent freeze-thaw cycles.
Expiry Date:	6 months

## Publications

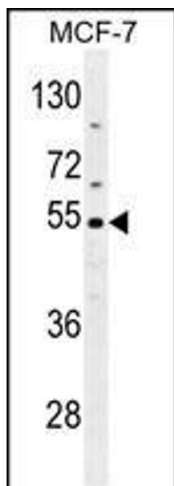
Product cited in:	Gispert, Parganlija, Klinkenberg, Dröse, Wittig, Mittelbronn, Grzmil, Koob, Hamann, Walter, Büchel, Adler, Hrabé de Angelis, Busch, Zell, Reichert, Brandt, Osiewacz, Jendrach, Auburger: " Loss of mitochondrial peptidase Clpp leads to infertility, hearing loss plus growth retardation via accumulation of CLPX, mtDNA and inflammatory factors." in: <b>Human molecular genetics</b> , Vol.
-------------------	---

Images



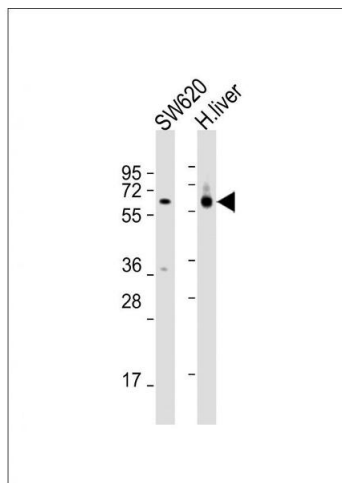
Flow Cytometry

**Image 1.** Overlay histogram showing MCF-7 cells stained with (ABIN654618 and ABIN2844316) (green line). The cells were fixed with 2 % paraformaldehyde (10 min) and then permeabilized with 90 % methanol for 10 min. The cells were then incubated in 2 % bovine serum albumin to block non-specific protein-protein interactions followed by the antibody ((ABIN654618 and ABIN2844316), 1:25 dilution) for 60 min at 37 °C. The secondary antibody used was Goat-Anti-Rabbit IgG, DyLight® 488 Conjugated Highly Cross-Adsorbed(OH191631) at 1/200 dilution for 40 min at 37 °C. Isotype control antibody (blue line) was rabbit IgG (1  $\mu$ g/ $1 \times 10^6$  cells) used under the same conditions. Acquisition of >10,000 events was performed.



Western Blotting

**Image 2.** CES2 Antibody (Center) (ABIN654618 and ABIN2844316) western blot analysis in MCF-7 cell line lysates (35  $\mu$ g/lane). This demonstrates the CES2 antibody detected the CES2 protein (arrow).



### Western Blotting

**Image 3.** All lanes : Anti-CES2 Antibody (Center) at 1:2000 dilution Lane 1: S whole cell lysates Lane 2: human liver lysates Lysates/proteins at 20 µg per lane. Secondary Goat Anti-Rabbit IgG, (H+L), Peroxidase conjugated at 1/10000 dilution. Predicted band size : 62 kDa Blocking/Dilution buffer: 5 % NFDM/TBST.

Please check the [product details page](#) for more images. Overall 6 images are available for ABIN654618.