

Datasheet for ABIN654619

anti-Complement C2 antibody (N-Term)[Go to Product page](#)**1** Image

Overview

Quantity:	400 µL
Target:	Complement C2
Binding Specificity:	AA 147-176, N-Term
Reactivity:	Human, Hamster
Host:	Rabbit
Clonality:	Polyclonal
Conjugate:	This Complement C2 antibody is un-conjugated
Application:	Western Blotting (WB)

Product Details

Immunogen:	This C2 antibody is generated from rabbits immunized with a KLH conjugated synthetic peptide between 147-176 AA from the N-terminal region of human C2.
Clone:	RB18356
Isotype:	Ig Fraction
Specificity:	This C2 antibody is generated from rabbits immunized with a KLH conjugated synthetic peptide between 150-180 amino acids from the N-terminal region of human C2.
Purification:	This antibody is purified through a protein A column, followed by peptide affinity purification.

Target Details

Target:	Complement C2
---------	---------------

Target Details

Alternative Name: C2 ([Complement C2 Products](#))

Background: Component C2 is a serum glycoprotein that functions as part of the classical pathway of the complement system. Activated C1 cleaves C2 into C2a and C2b. The serine proteinase C2a then combines with complement factor 4b to create the C3 or C5 convertase. Deficiency of C2 has been reported to associated with certain autoimmune diseases and SNPs in this gene have been associated with altered susceptibility to age-related macular degeneration. This gene localizes within the class III region of the MHC on the short arm of chromosome 6. Alternative splicing results in multiple transcript variants encoding distinct isoforms. Additional transcript variants have been described in publications but their full-length sequence has not been determined.

Synonyms: Complement C2,C2,

Molecular Weight: 83268 DA

Gene ID: 717

NCBI Accession: [NP_000054](#)

UniProt: [P06681](#)

Application Details

Application Notes: WB = 1:1000

Restrictions: For Research Use only

Handling

Format: Liquid

Concentration: 0.26 mg/mL

Buffer: PBS with 0.09 % (W/V) sodium azide

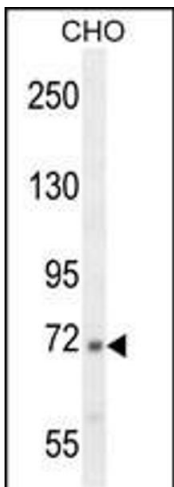
Preservative: Sodium azide

Precaution of Use: This product contains sodium azide: a POISONOUS AND HAZARDOUS SUBSTANCE which should be handled by trained staff only.

Storage: 4 °C/-20 °C

Storage Comment: Maintain refrigerated at 2-8 °C for up to 6 months. For long term storage store at -20 °C in small aliquots to prevent freeze-thaw cycles.

Validation report #103541 for Western Blotting (WB)



Western Blotting

Image 1. C2 Antibody (N-term) (ABIN654619 and ABIN2844317) western blot analysis in CHO cell line lysates (35 µg/lane). This demonstrates the C2 antibody detected the C2 protein (arrow).