

Datasheet for ABIN654621
anti-BARD1 antibody (N-Term)[Go to Product page](#)

1 Image

Overview

Quantity:	400 µL
Target:	BARD1
Binding Specificity:	AA 101-131, N-Term
Reactivity:	Human
Host:	Rabbit
Clonality:	Polyclonal
Conjugate:	This BARD1 antibody is un-conjugated
Application:	Western Blotting (WB)

Product Details

Immunogen:	This BARD1 antibody is generated from rabbits immunized with a KLH conjugated synthetic peptide between 101-131 amino acids from the N-terminal region of human BARD1.
Clone:	RB19063
Isotype:	Ig Fraction
Purification:	This antibody is purified through a protein A column, followed by peptide affinity purification.

Target Details

Target:	BARD1
Alternative Name:	BARD1 (BARD1 Products)
Background:	BARD1 is a protein which interacts with the N-terminal region of BRCA1. In addition to its ability

Target Details

to bind BRCA1 in vivo and in vitro, it shares homology with the 2 most conserved regions of BRCA1: the N-terminal RING motif and the C-terminal BRCT domain. The RING motif is a cysteine-rich sequence found in a variety of proteins that regulate cell growth, including the products of tumor suppressor genes and dominant protooncogenes. This protein also contains 3 tandem ankyrin repeats. The BARD1/BRCA1 interaction is disrupted by tumorigenic amino acid substitutions in BRCA1, implying that the formation of a stable complex between these proteins may be an essential aspect of BRCA1 tumor suppression. This protein may be the target of oncogenic mutations in breast or ovarian cancer.

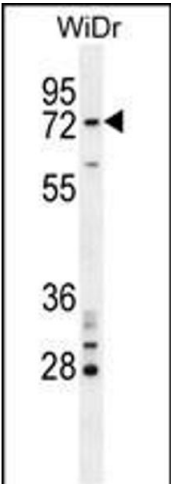
Molecular Weight:	86648
Gene ID:	580
NCBI Accession:	NP_000456
UniProt:	Q99728
Pathways:	DNA Damage Repair

Application Details

Application Notes:	WB: 1:1000
Restrictions:	For Research Use only

Handling

Format:	Liquid
Buffer:	Purified polyclonal antibody supplied in PBS with 0.09 % (W/V) sodium azide.
Preservative:	Sodium azide
Precaution of Use:	This product contains Sodium azide: a POISONOUS AND HAZARDOUS SUBSTANCE which should be handled by trained staff only.
Storage:	4 °C, -20 °C
Storage Comment:	Maintain refrigerated at 2-8 °C for up to 6 months. For long term storage store at -20 °C in small aliquots to prevent freeze-thaw cycles.
Expiry Date:	6 months



Western Blotting

Image 1. BARD1 Antibody (N-term) (ABIN654621 and ABIN2844318) western blot analysis in WiDr cell line lysates (35 µg/lane). This demonstrates the BARD1 antibody detected the BARD1 protein (arrow).