



[Go to Product page](#)

Datasheet for ABIN654624

anti-CHRDL1 antibody (N-Term)

2 Images

Overview

Quantity:	400 µL
Target:	CHRDL1
Binding Specificity:	AA 2-30, N-Term
Reactivity:	Human
Host:	Rabbit
Clonality:	Polyclonal
Conjugate:	This CHRDL1 antibody is un-conjugated
Application:	Western Blotting (WB), Immunohistochemistry (Paraffin-embedded Sections) (IHC (p))

Product Details

Immunogen:	This CHRDL1 antibody is generated from rabbits immunized with a KLH conjugated synthetic peptide between 2-30 amino acids from the N-terminal region of human CHRDL1.
Clone:	RB19795
Isotype:	Ig Fraction
Purification:	This antibody is purified through a protein A column, followed by peptide affinity purification.

Target Details

Target:	CHRDL1
Alternative Name:	CHRDL1 (CHRDL1 Products)
Background:	CHRDL1 is an antagonist of bone morphogenetic protein 4. The encoded protein may play a

Target Details

role in topographic retinotectal projection and in the regulation of retinal angiogenesis in response to hypoxia. Alternatively spliced transcript variants encoding different isoforms have been described.

Molecular Weight: 52026

Gene ID: 91851

NCBI Accession: [NP_001137453](#), [NP_001137454](#), [NP_001137455](#), [NP_660277](#)

UniProt: [Q9BU40](#)

Application Details

Application Notes: WB: 1:1000. IHC-P: 1:50~100

Restrictions: For Research Use only

Handling

Format: Liquid

Buffer: Purified polyclonal antibody supplied in PBS with 0.09 % (W/V) sodium azide.

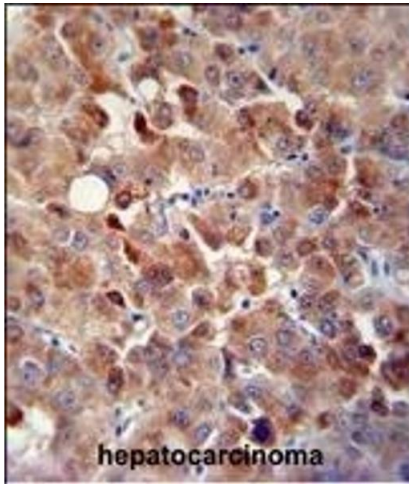
Preservative: Sodium azide

Precaution of Use: This product contains Sodium azide: a POISONOUS AND HAZARDOUS SUBSTANCE which should be handled by trained staff only.

Storage: 4 °C, -20 °C

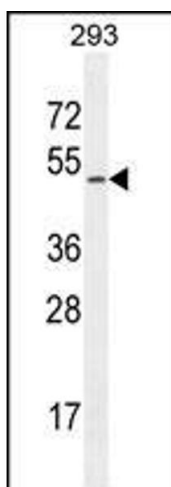
Storage Comment: Maintain refrigerated at 2-8 °C for up to 6 months. For long term storage store at -20 °C in small aliquots to prevent freeze-thaw cycles.

Expiry Date: 6 months



Immunohistochemistry (Paraffin-embedded Sections)

Image 1. CHRDL1 antibody (N-term) (ABIN654624 and ABIN2844321) immunohistochemistry analysis in formalin fixed and paraffin embedded human hepatocarcinoma followed by peroxidase conjugation of the secondary antibody and DAB staining. This data demonstrates the use of the CHRDL1 antibody (N-term) for immunohistochemistry. Clinical relevance has not been evaluated.



Western Blotting

Image 2. CHRDL1 Antibody (N-term) (ABIN654624 and ABIN2844321) western blot analysis in 293 cell line lysates (35 µg/lane). This demonstrates the CHRDL1 antibody detected the CHRDL1 protein (arrow).