

Datasheet for ABIN654625  
**anti-CD11b antibody (N-Term)**[Go to Product page](#)

7 Images

1 Publication

## Overview

Quantity:	400 µL
Target:	CD11b (ITGAM)
Binding Specificity:	AA 253-282, N-Term
Reactivity:	Human
Host:	Rabbit
Clonality:	Polyclonal
Conjugate:	This CD11b antibody is un-conjugated
Application:	Flow Cytometry (FACS), Western Blotting (WB), Immunohistochemistry (Paraffin-embedded Sections) (IHC (p))

## Product Details

Immunogen:	This CD11b antibody is generated from rabbits immunized with a KLH conjugated synthetic peptide between 253-282 amino acids from the N-terminal region of human CD11b.
Clone:	RB17991
Isotype:	Ig Fraction
Purification:	This antibody is purified through a protein A column, followed by peptide affinity purification.

## Target Details

Target:	CD11b (ITGAM)
Alternative Name:	CD11b ( <a href="#">ITGAM Products</a> )

## Target Details

Background:	CD11b is the integrin alpha M chain. Integrins are heterodimeric integral membrane proteins composed of an alpha chain and a beta chain. This I-domain containing alpha integrin combines with the beta 2 chain (ITGB2) to form a leukocyte-specific integrin referred to as macrophage receptor 1 ('Mac-1'), or inactivated-C3b (iC3b) receptor 3 ('CR3'). The alpha M beta 2 integrin is important in the adherence of neutrophils and monocytes to stimulated endothelium, and also in the phagocytosis of complement coated particles.
Molecular Weight:	127179
Gene ID:	3684
NCBI Accession:	<a href="#">NP_000623</a> , <a href="#">NP_001139280</a>
UniProt:	<a href="#">P11215</a>
Pathways:	<a href="#">Apoptosis</a> , <a href="#">Activation of Innate immune Response</a> , <a href="#">Toll-Like Receptors Cascades</a> , <a href="#">Activated T Cell Proliferation</a>

## Application Details

Application Notes:	WB: 1:2000. WB: 1:1000. WB: 1:500. IHC-P: 1:25. IHC-P: 1:25. IHC-P: 1:25. FC: 1:10~50
Restrictions:	For Research Use only

## Handling

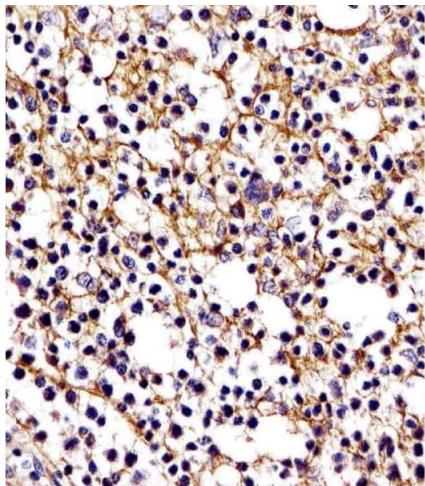
Format:	Liquid
Buffer:	Purified polyclonal antibody supplied in PBS with 0.09 % (W/V) sodium azide.
Preservative:	Sodium azide
Precaution of Use:	This product contains Sodium azide: a POISONOUS AND HAZARDOUS SUBSTANCE which should be handled by trained staff only.
Storage:	4 °C,-20 °C
Storage Comment:	Maintain refrigerated at 2-8 °C for up to 6 months. For long term storage store at -20 °C in small aliquots to prevent freeze-thaw cycles.
Expiry Date:	6 months

## Publications

Product cited in:	Zhang, Wang, Qin, Liu, Sun, Liu, Kuang, Jiang, Zhang: "cis-Acting elements and trans-acting
-------------------	---

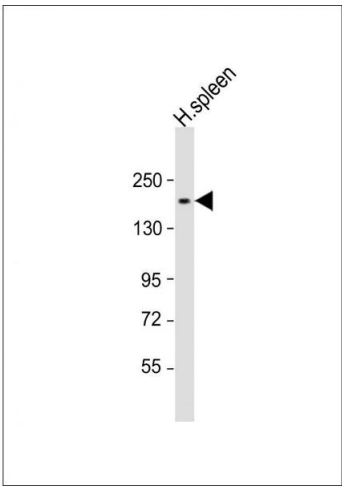
factors in the transcriptional regulation of raf kinase inhibitory protein expression." in: **PLoS ONE**, Vol. 8, Issue 12, pp. e83097, (2014) ([PubMed](#)).

Images



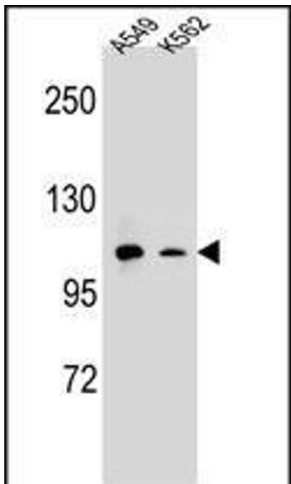
Immunohistochemistry (Paraffin-embedded Sections)

**Image 1.** (ABIN654625 and ABIN2844322) staining D11b in human tonsil tissue sections by Immunohistochemistry (IHC-P - paraformaldehyde-fixed, paraffin-embedded sections). Tissue was fixed with formaldehyde and blocked with 3 % BSA for 0. 5 hour at room temperature, antigen retrieval was by heat mediation with a citrate buffer ( pH 6). Samples were incubated with primary antibody (1/25) for 1 hours at 37 °C. A undiluted biotinylated goat polyvalent antibody was used as the secondary antibody.



Western Blotting

**Image 2.** Anti-CD11b Antibody (N-term) at 1:2000 dilution + human spleen lysate Lysates/proteins at 20 µg per lane. Secondary Goat Anti-Rabbit IgG, (H+L), Peroxidase conjugated at 1/10000 dilution. Predicted band size : 127 kDa Blocking/Dilution buffer: 5 % NFDM/TBST.



Western Blotting

**Image 3.** CD11b Antibody (N-term) (ABIN654625 and ABIN2844322) western blot analysis in A549,K562 cell line lysates (35 µg/lane).This demonstrates the CD11b antibody detected the CD11b protein (arrow).

## Images

---

Please check the [product details page](#) for more images. Overall 7 images are available for ABIN654625.