

Datasheet for ABIN654627  
**anti-A1CF antibody (C-Term)**

## 3 Images

[Go to Product page](#)

## Overview

Quantity:	400 µL
Target:	A1CF
Binding Specificity:	AA 394-423, C-Term
Reactivity:	Human
Host:	Rabbit
Clonality:	Polyclonal
Conjugate:	This A1CF antibody is un-conjugated
Application:	Western Blotting (WB), Flow Cytometry (FACS), Immunohistochemistry (Paraffin-embedded Sections) (IHC (p))

## Product Details

Immunogen:	This ACF antibody is generated from rabbits immunized with a KLH conjugated synthetic peptide between 394-423 amino acids from the C-terminal region of human ACF.
Clone:	RB20614
Isotype:	Ig Fraction
Purification:	This antibody is purified through a protein A column, followed by peptide affinity purification.

## Target Details

Target:	A1CF
Alternative Name:	ACF ( <a href="#">A1CF Products</a> )

## Target Details

**Background:** Mammalian apolipoprotein B mRNA undergoes site-specific C to U deamination, which is mediated by a multi-component enzyme complex containing a minimal core composed of APOBEC-1 and a complementation factor encoded by this gene. The gene product has three non-identical RNA recognition motifs and belongs to the hnRNP R family of RNA-binding proteins. It has been proposed that this complementation factor functions as an RNA-binding subunit and docks APOBEC-1 to deaminate the upstream cytidine. Studies suggest that the protein may also be involved in other RNA editing or RNA processing events.

**Molecular Weight:** 65202

**Gene ID:** 29974

**NCBI Accession:** [NP\\_001185747](#), [NP\\_001185748](#), [NP\\_001185749](#), [NP\\_055391](#), [NP\\_620310](#), [NP\\_620311](#)

**UniProt:** [Q9NQ94](#)

## Application Details

**Application Notes:** WB: 1:1000. IHC-P: 1:50~100. FC: 1:10~50

**Restrictions:** For Research Use only

## Handling

**Format:** Liquid

**Buffer:** Purified polyclonal antibody supplied in PBS with 0.09 % (W/V) sodium azide.

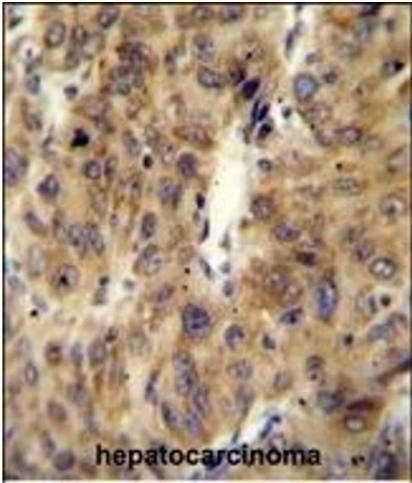
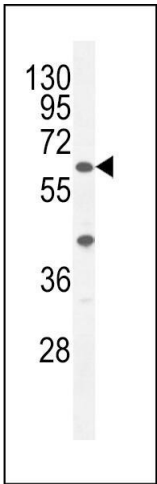
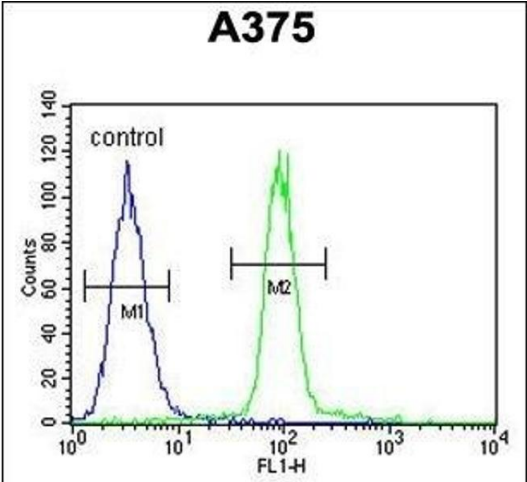
**Preservative:** Sodium azide

**Precaution of Use:** This product contains Sodium azide: a POISONOUS AND HAZARDOUS SUBSTANCE which should be handled by trained staff only.

**Storage:** 4 °C, -20 °C

**Storage Comment:** Maintain refrigerated at 2-8 °C for up to 6 months. For long term storage store at -20 °C in small aliquots to prevent freeze-thaw cycles.

**Expiry Date:** 6 months



### Flow Cytometry

**Image 1.** ACF Antibody (C-term) (ABIN654627 and ABIN2844324) flow cytometric analysis of cells (right histogram) compared to a negative control cell (left histogram). FITC-conjugated goat-anti-rabbit secondary antibodies were used for the analysis.

### Western Blotting

**Image 2.** ACF Antibody (C-term) (ABIN654627 and ABIN2844324) western blot analysis in cell line lysates (35  $\mu$ g/lane). This demonstrates the ACF antibody detected the ACF protein (arrow).

### Immunohistochemistry (Paraffin-embedded Sections)

**Image 3.** ACF Antibody (C-term) (ABIN654627 and ABIN2844324) immunohistochemistry analysis in formalin fixed and paraffin embedded human hepatocarcinoma followed by peroxidase conjugation of the secondary antibody and DAB staining. This data demonstrates the use of the ACF Antibody (C-term) for immunohistochemistry. Clinical relevance has not been evaluated.