

Datasheet for ABIN654632
anti-PDE7B antibody (C-Term)[Go to Product page](#)

1 Image

Overview

Quantity:	400 µL
Target:	PDE7B
Binding Specificity:	AA 421-450, C-Term
Reactivity:	Human
Host:	Rabbit
Clonality:	Polyclonal
Conjugate:	This PDE7B antibody is un-conjugated
Application:	Western Blotting (WB)

Product Details

Immunogen:	This PDE7B antibody is generated from rabbits immunized with a KLH conjugated synthetic peptide between 421-450 amino acids from the C-terminal region of human PDE7B.
Clone:	RB24545
Isotype:	Ig Fraction
Purification:	This antibody is purified through a protein A column, followed by peptide affinity purification.

Target Details

Target:	PDE7B
Alternative Name:	PDE7B (PDE7B Products)
Background:	The 3',5'-cyclic nucleotides cAMP and cGMP function as second messengers in a wide variety

Target Details

of signal transduction pathways. 3',5'-cyclic nucleotide phosphodiesterases (PDEs) catalyze the hydrolysis of cAMP and cGMP to the corresponding 5'-monophosphates and provide a mechanism to downregulate cAMP and cGMP signaling. This gene encodes a cAMP-specific phosphodiesterase, a member of the cyclic nucleotide phosphodiesterase family.

Molecular Weight: 51835

Gene ID: 27115

NCBI Accession: [NP_061818](#)

UniProt: [Q9NP56](#)

Pathways: [cAMP Metabolic Process](#)

Application Details

Application Notes: WB: 1:1000

Restrictions: For Research Use only

Handling

Format: Liquid

Buffer: Purified polyclonal antibody supplied in PBS with 0.09 % (W/V) sodium azide.

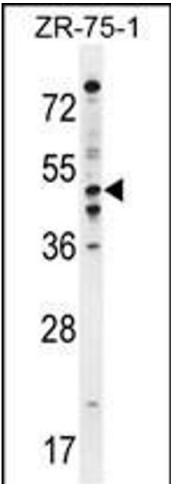
Preservative: Sodium azide

Precaution of Use: This product contains Sodium azide: a POISONOUS AND HAZARDOUS SUBSTANCE which should be handled by trained staff only.

Storage: 4 °C,-20 °C

Storage Comment: Maintain refrigerated at 2-8 °C for up to 6 months. For long term storage store at -20 °C in small aliquots to prevent freeze-thaw cycles.

Expiry Date: 6 months



Western Blotting

Image 1. PDE7B Antibody (C-term) (ABIN654632 and ABIN2844328) western blot analysis in ZR-75-1 cell line lysates (35 µg/lane). This demonstrates the PDE7B antibody detected the PDE7B protein (arrow).