

Datasheet for ABIN654633

**anti-PPP1R3A antibody (AA 754-782)**[Go to Product page](#)**2** Images

## Overview

Quantity:	400 µL
Target:	PPP1R3A
Binding Specificity:	AA 754-782
Reactivity:	Human
Host:	Rabbit
Clonality:	Polyclonal
Conjugate:	This PPP1R3A antibody is un-conjugated
Application:	Western Blotting (WB), Flow Cytometry (FACS)

## Product Details

Immunogen:	This PPP1R3A antibody is generated from rabbits immunized with a KLH conjugated synthetic peptide between 754-782 amino acids from the Central region of human PPP1R3A.
Clone:	RB21342
Isotype:	Ig Fraction
Predicted Reactivity:	Rb
Purification:	This antibody is purified through a protein A column, followed by peptide affinity purification.

## Target Details

Target:	PPP1R3A
Alternative Name:	PPP1R3A ( <a href="#">PPP1R3A Products</a> )

## Target Details

**Background:** The glycogen-associated form of protein phosphatase-1 (PP1) derived from skeletal muscle is a heterodimer composed of a 37-kD catalytic subunit and a 124-kD targeting and regulatory subunit. This gene encodes the regulatory subunit which binds to muscle glycogen with high affinity, thereby enhancing dephosphorylation of glycogen-bound substrates for PP1 such as glycogen synthase and glycogen phosphorylase kinase. [provided by RefSeq].

**Molecular Weight:** 125767

**Gene ID:** 5506

**NCBI Accession:** [NP\\_002702](#)

**UniProt:** [Q16821](#)

**Pathways:** [Cellular Glucan Metabolic Process](#)

## Application Details

**Application Notes:** WB: 1:1000. FC: 1:10~50

**Restrictions:** For Research Use only

## Handling

**Format:** Liquid

**Buffer:** Purified polyclonal antibody supplied in PBS with 0.09 % (W/V) sodium azide.

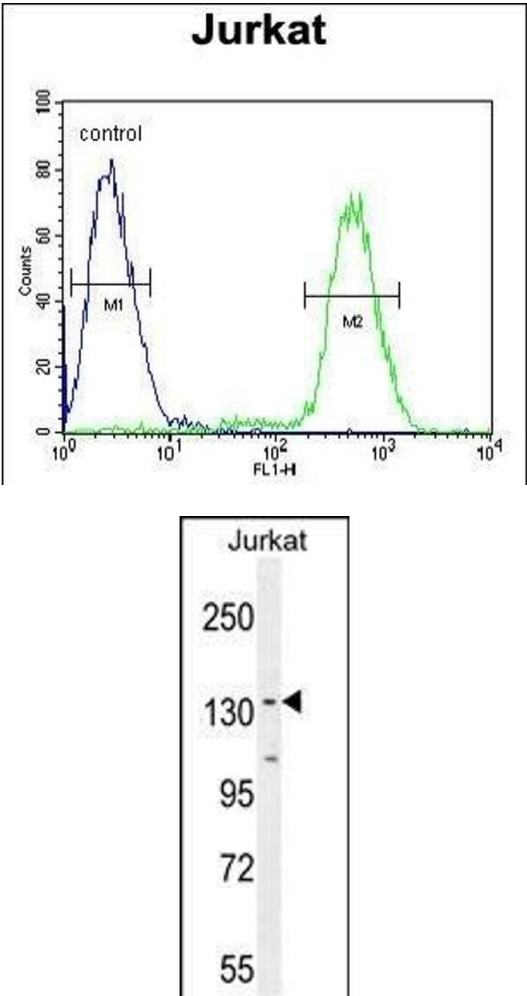
**Preservative:** Sodium azide

**Precaution of Use:** This product contains Sodium azide: a POISONOUS AND HAZARDOUS SUBSTANCE which should be handled by trained staff only.

**Storage:** 4 °C, -20 °C

**Storage Comment:** Maintain refrigerated at 2-8 °C for up to 6 months. For long term storage store at -20 °C in small aliquots to prevent freeze-thaw cycles.

**Expiry Date:** 6 months



Flow Cytometry

**Image 1.** P1R3A Antibody (Center) (ABIN654633 and ABIN2844329) flow cytometric analysis of Jurkat cells (right histogram) compared to a negative control cell (left histogram).FITC-conjugated goat-anti-rabbit secondary antibodies were used for the analysis.

Western Blotting

**Image 2.** P1R3A Antibody (Center) (ABIN654633 and ABIN2844329) western blot analysis in Jurkat cell line lysates (35 µg/lane).This demonstrates the P1R3A antibody detected the P1R3A protein (arrow).