



[Go to Product page](#)

Datasheet for ABIN654634
anti-APCS antibody (C-Term)

2 Images

Overview

Quantity:	400 µL
Target:	APCS
Binding Specificity:	AA 151-178, C-Term
Reactivity:	Human
Host:	Rabbit
Clonality:	Polyclonal
Conjugate:	This APCS antibody is un-conjugated
Application:	Western Blotting (WB), Immunohistochemistry (Paraffin-embedded Sections) (IHC (p))

Product Details

Immunogen:	This APCS antibody is generated from rabbits immunized with a KLH conjugated synthetic peptide between 151-178 amino acids from the C-terminal region of human APCS.
Clone:	RB28441
Isotype:	Ig Fraction
Purification:	This antibody is purified through a protein A column, followed by peptide affinity purification.

Target Details

Target:	APCS
Alternative Name:	APCS (APCS Products)
Background:	The protein encoded by this gene is a glycoprotein, belonging to the pentraxin family of

Target Details

proteins, which has a characteristic pentameric organization. These family members have considerable sequence homology which is thought to be the result of gene duplication. The binding of the encoded protein to proteins in the pathological amyloid cross-beta fold suggests its possible role as a chaperone. This protein is also thought to control the degradation of chromatin. It has been demonstrated that this protein binds to apoptotic cells at an early stage, which raises the possibility that it is involved in dealing with apoptotic cells in vivo.

Molecular Weight: 25387

Gene ID: 325

NCBI Accession: [NP_001630](#)

UniProt: [P02743](#)

Application Details

Application Notes: WB: 1:1000. IHC-P: 1:50~100

Restrictions: For Research Use only

Handling

Format: Liquid

Buffer: Purified polyclonal antibody supplied in PBS with 0.09 % (W/V) sodium azide.

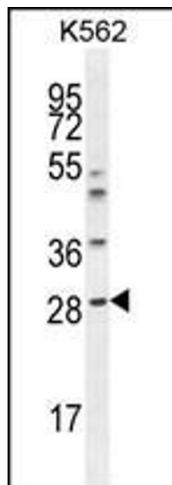
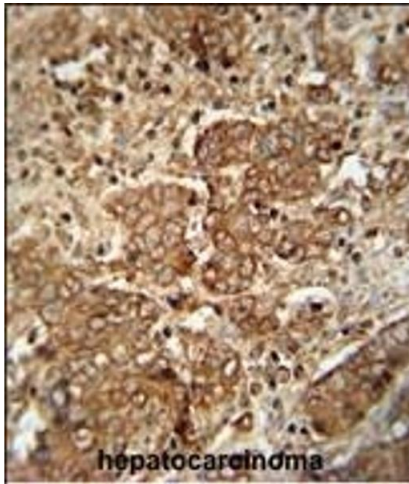
Preservative: Sodium azide

Precaution of Use: This product contains Sodium azide: a POISONOUS AND HAZARDOUS SUBSTANCE which should be handled by trained staff only.

Storage: 4 °C, -20 °C

Storage Comment: Maintain refrigerated at 2-8 °C for up to 6 months. For long term storage store at -20 °C in small aliquots to prevent freeze-thaw cycles.

Expiry Date: 6 months



Immunohistochemistry (Paraffin-embedded Sections)

Image 1. CS antibody (C-term) 10677b immunohistochemistry analysis in formalin fixed and paraffin embedded human hepatocarcinoma followed by peroxidase conjugation of the secondary antibody and DAB staining. This data demonstrates the use of the CS antibody (C-term) for immunohistochemistry. Clinical relevance has not been evaluated.

Western Blotting

Image 2. CS Antibody (C-term) 10677b western blot analysis in K562 cell line lysates (35 µg/lane). This demonstrates the CS antibody detected the CS protein (arrow).