

Datasheet for ABIN654636
anti-HLA-B antibody (AA 182-208)



[Go to Product page](#)

1 Image

Overview

| | |
|----------------------|--------------------------------------|
| Quantity: | 400 µL |
| Target: | HLA-B |
| Binding Specificity: | AA 182-208 |
| Reactivity: | Human |
| Host: | Rabbit |
| Clonality: | Polyclonal |
| Conjugate: | This HLA-B antibody is un-conjugated |
| Application: | Western Blotting (WB) |

Product Details

| | |
|---------------|---|
| Immunogen: | This HLA-B antibody is generated from rabbits immunized with a KLH conjugated synthetic peptide between 182-208 amino acids from the Central region of human HLA-B. |
| Clone: | RB28442 |
| Isotype: | Ig Fraction |
| Purification: | This antibody is purified through a protein A column, followed by peptide affinity purification. |

Target Details

| | |
|-------------------|---|
| Target: | HLA-B |
| Alternative Name: | HLA-B (HLA-B Products) |
| Background: | HLA-B belongs to the HLA class I heavy chain paralogues. This class I molecule is a |

Target Details

heterodimer consisting of a heavy chain and a light chain (beta-2 microglobulin). The heavy chain is anchored in the membrane. Class I molecules play a central role in the immune system by presenting peptides derived from the endoplasmic reticulum lumen. They are expressed in nearly all cells. The heavy chain is approximately 45 kDa and its gene contains 8 exons. Exon 1 encodes the leader peptide, exon 2 and 3 encode the alpha1 and alpha2 domains, which both bind the peptide, exon 4 encodes the alpha3 domain, exon 5 encodes the transmembrane region and exons 6 and 7 encode the cytoplasmic tail. Polymorphisms within exon 2 and exon 3 are responsible for the peptide binding specificity of each class one molecule. Typing for these polymorphisms is routinely done for bone marrow and kidney transplantation. Hundreds of HLA-B alleles have been described.

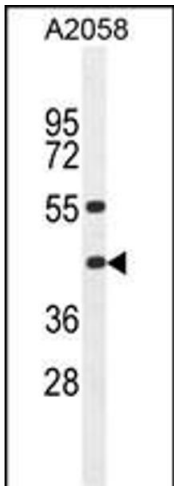
| | |
|-------------------|--|
| Molecular Weight: | 40460 |
| Gene ID: | 3106 |
| NCBI Accession: | NP_005505 |
| UniProt: | P01889 |
| Pathways: | Regulation of Leukocyte Mediated Immunity , Positive Regulation of Immune Effector Process , Cancer Immune Checkpoints , Human Leukocyte Antigen (HLA) in Adaptive Immune Response |

Application Details

| | |
|--------------------|-----------------------|
| Application Notes: | WB: 1:1000 |
| Restrictions: | For Research Use only |

Handling

| | |
|--------------------|--|
| Format: | Liquid |
| Buffer: | Purified polyclonal antibody supplied in PBS with 0.09 % (W/V) sodium azide. |
| Preservative: | Sodium azide |
| Precaution of Use: | This product contains Sodium azide: a POISONOUS AND HAZARDOUS SUBSTANCE which should be handled by trained staff only. |
| Storage: | 4 °C, -20 °C |
| Storage Comment: | Maintain refrigerated at 2-8 °C for up to 6 months. For long term storage store at -20 °C in small aliquots to prevent freeze-thaw cycles. |
| Expiry Date: | 6 months |



Western Blotting

Image 1. HLA-B Antibody (Center) (ABIN654636 and ABIN2844332) western blot analysis in cell line lysates (35 μ g/lane). This demonstrates the HLA-B antibody detected the HLA-B protein (arrow).