

Datasheet for ABIN654639  
**anti-NFKBIL1 antibody (AA 256-285)**

## 3 Images

[Go to Product page](#)

## Overview

Quantity:	400 µL
Target:	NFKBIL1
Binding Specificity:	AA 256-285
Reactivity:	Human
Host:	Rabbit
Clonality:	Polyclonal
Conjugate:	This NFKBIL1 antibody is un-conjugated
Application:	Western Blotting (WB), Immunofluorescence (IF), Flow Cytometry (FACS)

## Product Details

Immunogen:	This NFKBIL1 antibody is generated from rabbits immunized with a KLH conjugated synthetic peptide between 256-285 amino acids from the Central region of human NFKBIL1.
Clone:	RB28446
Isotype:	Ig Fraction
Purification:	This antibody is purified through a protein A column, followed by peptide affinity purification.

## Target Details

Target:	NFKBIL1
Alternative Name:	NFKBIL1 ( <a href="#">NFKBIL1 Products</a> )
Background:	This gene encodes a divergent member of the I-kappa-B family of proteins. Its function has not

## Target Details

been determined. The gene lies within the major histocompatibility complex (MHC) class I region on chromosome 6. Multiple transcript variants encoding different isoforms have been found for this gene. [provided by RefSeq].

Molecular Weight: 43204

Gene ID: 4795

NCBI Accession: [NP\\_001138433](#), [NP\\_001138434](#), [NP\\_001138435](#), [NP\\_004998](#)

UniProt: [Q9UBC1](#)

Pathways: [Cellular Response to Molecule of Bacterial Origin](#), [Maintenance of Protein Location](#)

## Application Details

Application Notes: IF: 1:10~50. WB: 1:1000. FC: 1:10~50

Restrictions: For Research Use only

## Handling

Format: Liquid

Buffer: Purified polyclonal antibody supplied in PBS with 0.09 % (W/V) sodium azide.

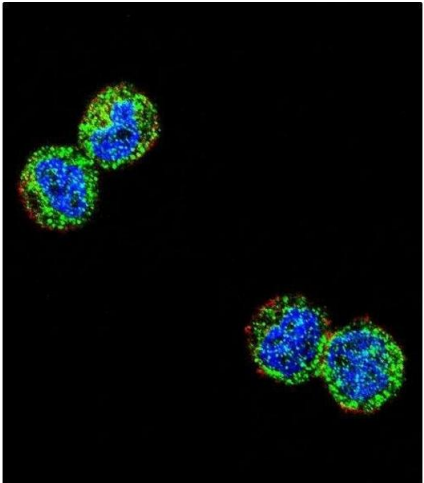
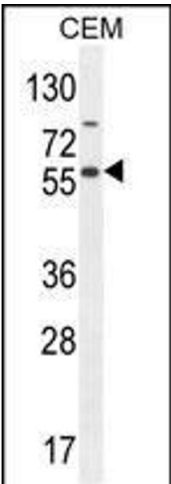
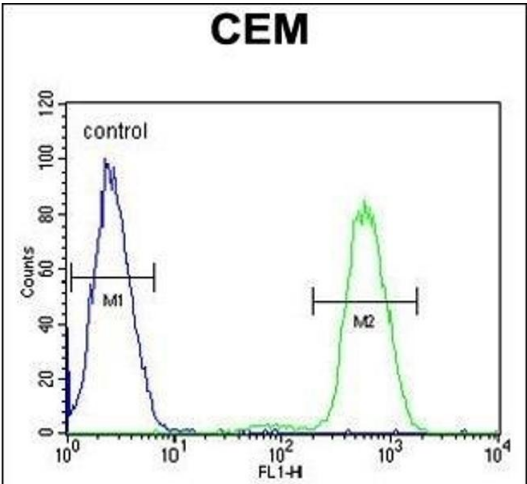
Preservative: Sodium azide

Precaution of Use: This product contains Sodium azide: a POISONOUS AND HAZARDOUS SUBSTANCE which should be handled by trained staff only.

Storage: 4 °C,-20 °C

Storage Comment: Maintain refrigerated at 2-8 °C for up to 6 months. For long term storage store at -20 °C in small aliquots to prevent freeze-thaw cycles.

Expiry Date: 6 months



### Flow Cytometry

**Image 1.** NFKBIL1 Antibody (Center) (ABIN654639 and ABIN2844336) flow cytometric analysis of CEM cells (right histogram) compared to a negative control cell (left histogram). FITC-conjugated goat-anti-rabbit secondary antibodies were used for the analysis.

### Western Blotting

**Image 2.** NFKBIL1 Antibody (Center) (ABIN654639 and ABIN2844336) western blot analysis in CEM cell line lysates (35 µg/lane). This demonstrates the NFKBIL1 antibody detected the NFKBIL1 protein (arrow).

### Immunofluorescence

**Image 3.** Confocal immunofluorescent analysis of NFKBIL1 Antibody (Center) (ABIN654639 and ABIN2844336) with MDA-M cell followed by Alexa Fluor 488-conjugated goat anti-rabbit IgG (green). Actin filaments have been labeled with Alexa Fluor 555 phalloidin (red). DAPI was used to stain the cell nuclear (blue).