

Datasheet for ABIN654640
anti-NPSR1 antibody (C-Term)[Go to Product page](#)

1 Image

Overview

Quantity:	400 µL
Target:	NPSR1
Binding Specificity:	AA 327-356, C-Term
Reactivity:	Human, Mouse
Host:	Rabbit
Clonality:	Polyclonal
Conjugate:	This NPSR1 antibody is un-conjugated
Application:	Western Blotting (WB)

Product Details

Immunogen:	This NPSR1 antibody is generated from rabbits immunized with a KLH conjugated synthetic peptide between 327-356 amino acids from the C-terminal region of human NPSR1.
Clone:	RB22344
Isotype:	Ig Fraction
Purification:	This antibody is purified through a protein A column, followed by peptide affinity purification.

Target Details

Target:	NPSR1
Alternative Name:	NPSR1 (NPSR1 Products)
Background:	NPSR1 is a member of the G protein-coupled receptor 1 family and encodes a plasma

Target Details

membrane protein. Increased expression of this gene in ciliated cells of the respiratory epithelium and in bronchial smooth muscle cells is associated with asthma.

Molecular Weight: 42687

Gene ID: 387129

NCBI Accession: [NP_997055](#), [NP_997056](#)

UniProt: [Q6W5P4](#)

Application Details

Application Notes: WB: 1:1000

Restrictions: For Research Use only

Handling

Format: Liquid

Buffer: Purified polyclonal antibody supplied in PBS with 0.09 % (W/V) sodium azide.

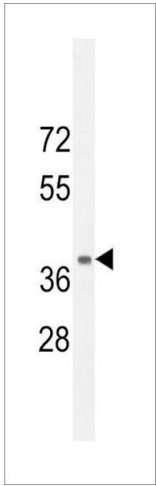
Preservative: Sodium azide

Precaution of Use: This product contains Sodium azide: a POISONOUS AND HAZARDOUS SUBSTANCE which should be handled by trained staff only.

Storage: 4 °C, -20 °C

Storage Comment: Maintain refrigerated at 2-8 °C for up to 6 months. For long term storage store at -20 °C in small aliquots to prevent freeze-thaw cycles.

Expiry Date: 6 months



Western Blotting

Image 1. NPSR1 Antibody (C-term) (ABIN654640 and ABIN2844337) western blot analysis in mouse kidney tissue lysates (35 µg/lane). This demonstrates the NPSR1 antibody detected the NPSR1 protein (arrow).