

Datasheet for ABIN654642
anti-SEL1L antibody (AA 156-182)[Go to Product page](#)

3 Images

Overview

Quantity:	400 µL
Target:	SEL1L
Binding Specificity:	AA 156-182
Reactivity:	Human
Host:	Rabbit
Clonality:	Polyclonal
Conjugate:	This SEL1L antibody is un-conjugated
Application:	Western Blotting (WB), Flow Cytometry (FACS), Immunohistochemistry (Paraffin-embedded Sections) (IHC (p))

Product Details

Immunogen:	This SEL1L antibody is generated from rabbits immunized with a KLH conjugated synthetic peptide between 156-182 amino acids from the Central region of human SEL1L.
Clone:	RB28451
Isotype:	Ig Fraction
Purification:	This antibody is purified through a protein A column, followed by peptide affinity purification.

Target Details

Target:	SEL1L
Alternative Name:	SEL1L (SEL1L Products)

Target Details

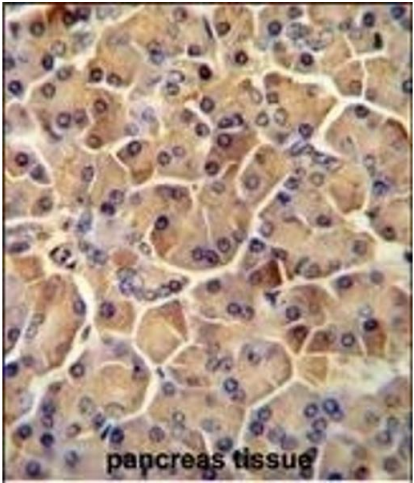
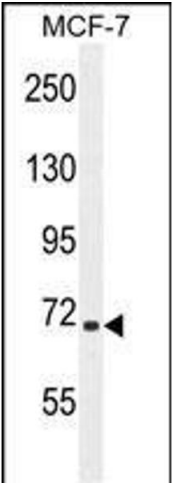
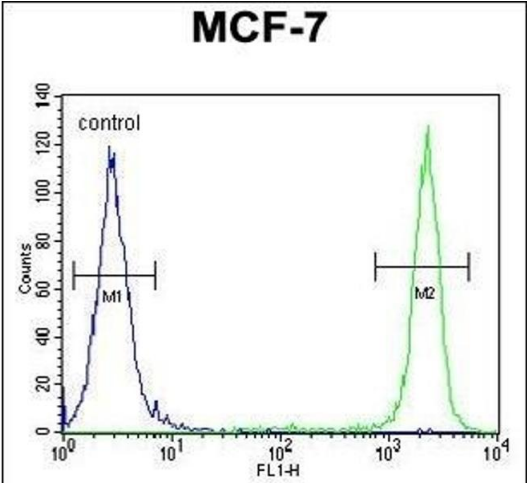
Background:	May play a role in Notch signaling (By similarity). May be involved in the endoplasmic reticulum quality control (ERQC) system also called ER-associated degradation (ERAD) involved in ubiquitin-dependent degradation of misfolded endoplasmic reticulum proteins.
Molecular Weight:	88755
Gene ID:	6400
NCBI Accession:	NP_001231913 , NP_005056
UniProt:	Q9UBV2

Application Details

Application Notes:	WB: 1:1000. IHC-P: 1:50~100. FC: 1:10~50
Restrictions:	For Research Use only

Handling

Format:	Liquid
Buffer:	Purified polyclonal antibody supplied in PBS with 0.09 % (W/V) sodium azide.
Preservative:	Sodium azide
Precaution of Use:	This product contains Sodium azide: a POISONOUS AND HAZARDOUS SUBSTANCE which should be handled by trained staff only.
Storage:	4 °C, -20 °C
Storage Comment:	Maintain refrigerated at 2-8 °C for up to 6 months. For long term storage store at -20 °C in small aliquots to prevent freeze-thaw cycles.
Expiry Date:	6 months



Flow Cytometry

Image 1. SEL1L Antibody (Center) (ABIN654642 and ABIN2844339) flow cytometric analysis of MCF-7 cells (right histogram) compared to a negative control cell (left histogram). FITC-conjugated goat-anti-rabbit secondary antibodies were used for the analysis.

Western Blotting

Image 2. SEL1L Antibody (Center) (ABIN654642 and ABIN2844339) western blot analysis in MCF-7 cell line lysates (35 µg/lane). This demonstrates the SEL1L antibody detected the SEL1L protein (arrow).

Immunohistochemistry (Paraffin-embedded Sections)

Image 3. SEL1L antibody (Center) (ABIN654642 and ABIN2844339) immunohistochemistry analysis in formalin fixed and paraffin embedded human pancreas tissue followed by peroxidase conjugation of the secondary antibody and DAB staining. This data demonstrates the use of the SEL1L antibody (Center) for immunohistochemistry. Clinical relevance has not been evaluated.