



[Go to Product page](#)

Datasheet for ABIN654645
anti-MCHR1 antibody (C-Term)

4 Images

Overview

Quantity:	400 µL
Target:	MCHR1
Binding Specificity:	AA 396-422, C-Term
Reactivity:	Human
Host:	Rabbit
Clonality:	Polyclonal
Conjugate:	This MCHR1 antibody is un-conjugated
Application:	Western Blotting (WB), Flow Cytometry (FACS), Immunohistochemistry (Paraffin-embedded Sections) (IHC (p))

Product Details

Immunogen:	This MCHR1 antibody is generated from rabbits immunized with a KLH conjugated synthetic peptide between 396-422 amino acids from the C-terminal region of human MCHR1.
Clone:	RB28532
Isotype:	Ig Fraction
Predicted Reactivity:	M, Rat
Purification:	This antibody is purified through a protein A column, followed by peptide affinity purification.

Target Details

Target:	MCHR1
---------	-------

Target Details

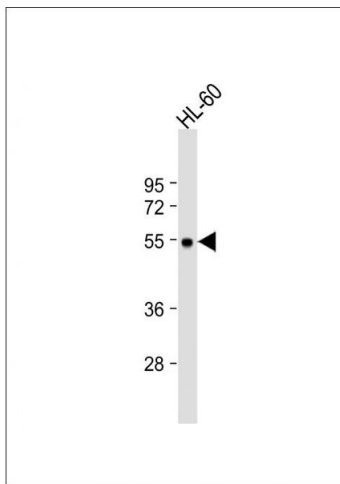
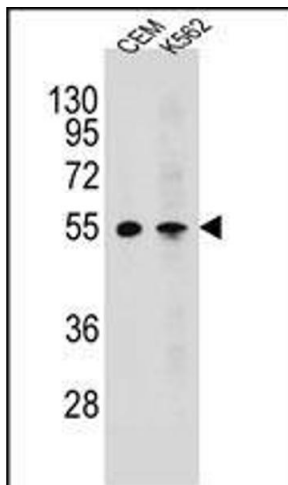
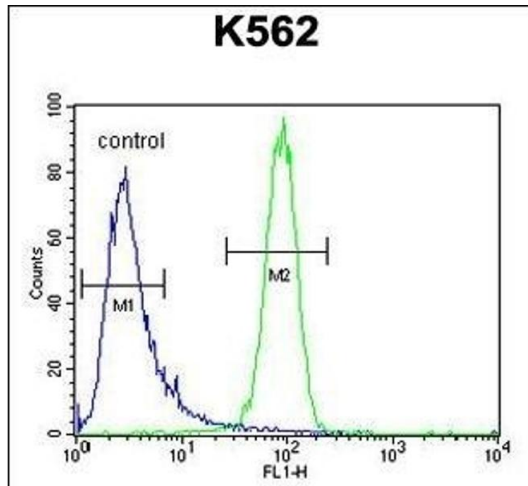
Alternative Name:	MCHR1 (MCHR1 Products)
Background:	The protein encoded by this gene, a member of the G protein-coupled receptor family 1, is an integral plasma membrane protein which binds melanin-concentrating hormone. The encoded protein can inhibit cAMP accumulation and stimulate intracellular calcium flux, and is probably involved in the neuronal regulation of food consumption. Although structurally similar to somatostatin receptors, this protein does not seem to bind somatostatin.
Molecular Weight:	45963
Gene ID:	2847
NCBI Accession:	NP_005288
UniProt:	Q99705
Pathways:	Feeding Behaviour

Application Details

Application Notes:	WB: 1:1000. WB: 1:1000. IHC-P: 1:50~100. FC: 1:10~50
Restrictions:	For Research Use only

Handling

Format:	Liquid
Buffer:	Purified polyclonal antibody supplied in PBS with 0.09 % (W/V) sodium azide.
Preservative:	Sodium azide
Precaution of Use:	This product contains Sodium azide: a POISONOUS AND HAZARDOUS SUBSTANCE which should be handled by trained staff only.
Storage:	4 °C,-20 °C
Storage Comment:	Maintain refrigerated at 2-8 °C for up to 6 months. For long term storage store at -20 °C in small aliquots to prevent freeze-thaw cycles.
Expiry Date:	6 months



Flow Cytometry

Image 1. MCHR1 Antibody (C-term) (ABIN654645 and ABIN2844341) flow cytometric analysis of K562 cells (right histogram) compared to a negative control cell (left histogram). FITC-conjugated goat-anti-rabbit secondary antibodies were used for the analysis.

Western Blotting

Image 2. MCHR1 Antibody (C-term) (ABIN654645 and ABIN2844341) western blot analysis in CEM, K562 cell line lysates (35 µg/lane). This demonstrates the MCHR1 antibody detected the MCHR1 protein (arrow).

Western Blotting

Image 3. Anti-MCHR1 Antibody (C-term) at 1:1000 dilution + HL-60 whole cell lysate Lysates/proteins at 20 µg per lane. Secondary Goat Anti-Rabbit IgG, (H+L), Peroxidase conjugated at 1/10000 dilution. Predicted band size : 46 kDa Blocking/Dilution buffer: 5 % NFDM/TBST.

Please check the [product details page](#) for more images. Overall 4 images are available for ABIN654645.