

Datasheet for ABIN654646
anti-SORBS1 antibody (AA 866-892)[Go to Product page](#)

3 Images

1 Publication

Overview

Quantity:	400 µL
Target:	SORBS1
Binding Specificity:	AA 866-892
Reactivity:	Human, Hamster
Host:	Rabbit
Clonality:	Polyclonal
Conjugate:	This SORBS1 antibody is un-conjugated
Application:	Western Blotting (WB), Immunofluorescence (IF)

Product Details

Immunogen:	This SORBS1 antibody is generated from rabbits immunized with a KLH conjugated synthetic peptide between 866-892 amino acids from the Central region of human SORBS1.
Clone:	RB26778
Isotype:	Ig Fraction
Predicted Reactivity:	M
Purification:	This antibody is purified through a protein A column, followed by peptide affinity purification.

Target Details

Target:	SORBS1
Alternative Name:	SORBS1 (SORBS1 Products)

Target Details

Background:	Plays a role in tyrosine phosphorylation of CBL by linking CBL to the insulin receptor. Required for insulin-stimulated glucose transport. Involved in formation of actin stress fibers and focal adhesions (By similarity).
Molecular Weight:	142513
Gene ID:	10580
NCBI Accession:	NP_001030126 , NP_001030127 , NP_001030128 , NP_001030129 , NP_006425 , NP_056200 , NP_079267
UniProt:	Q9BX66
Pathways:	Cell-Cell Junction Organization , Regulation of Carbohydrate Metabolic Process

Application Details

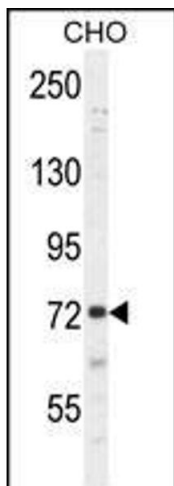
Application Notes:	IF: 1:10~50. WB: 1:1000. WB: 1:1000
Restrictions:	For Research Use only

Handling

Format:	Liquid
Buffer:	Purified polyclonal antibody supplied in PBS with 0.09 % (W/V) sodium azide.
Preservative:	Sodium azide
Precaution of Use:	This product contains Sodium azide: a POISONOUS AND HAZARDOUS SUBSTANCE which should be handled by trained staff only.
Storage:	4 °C,-20 °C
Storage Comment:	Maintain refrigerated at 2-8 °C for up to 6 months. For long term storage store at -20 °C in small aliquots to prevent freeze-thaw cycles.
Expiry Date:	6 months

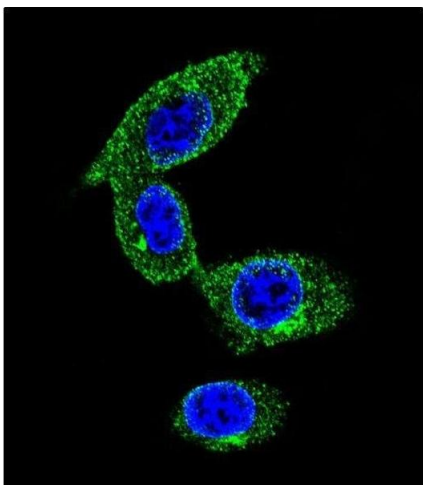
Publications

Product cited in:	Wei, Cheng, Ouyang, Zhang, Hu, Chen, Wang, Lu, Zhang, Wang, Liu: "Glycoprotein screening in colorectal cancer based on differentially expressed Tn antigen." in: Oncology reports , Vol. 36, Issue 3, pp. 1313-24, (2017) (PubMed).
-------------------	--



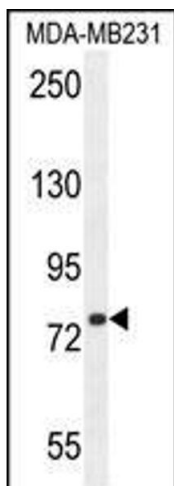
Western Blotting

Image 1. SORBS1 Antibody (Center) (ABIN654646 and ABIN2844342) western blot analysis in CHO cell line lysates (35 µg/lane). This demonstrates the SORBS1 antibody detected the SORBS1 protein (arrow).



Immunofluorescence

Image 2. Confocal immunofluorescent analysis of SORBS1 Antibody (Center) (ABIN654646 and ABIN2844342) with MDA-M cell followed by Alexa Fluor 488-conjugated goat anti-rabbit IgG (green). DI was used to stain the cell nuclear (blue).



Western Blotting

Image 3. SORBS1 Antibody (Center) (ABIN654646 and ABIN2844342) western blot analysis in MDA-M cell line lysates (35 µg/lane). This demonstrates the SORBS1 antibody detected the SORBS1 protein (arrow).