



[Go to Product page](#)

Datasheet for ABIN654647

## anti-GM-CSF antibody (AA 59-85)

4 Images

1 Publication

### Overview

Quantity:	400 µL
Target:	GM-CSF (CSF2)
Binding Specificity:	AA 59-85
Reactivity:	Human
Host:	Rabbit
Clonality:	Polyclonal
Conjugate:	This GM-CSF antibody is un-conjugated
Application:	Western Blotting (WB), Flow Cytometry (FACS), Immunofluorescence (IF), Immunohistochemistry (Paraffin-embedded Sections) (IHC (p))

### Product Details

Immunogen:	This CSF2 antibody is generated from rabbits immunized with a KLH conjugated synthetic peptide between 59-85 amino acids from the Central region of human CSF2.
Clone:	RB23360
Isotype:	IgG
Purification:	This antibody is purified through a protein A column, followed by peptide affinity purification.

### Target Details

Target:	GM-CSF (CSF2)
Alternative Name:	CSF2 ( <a href="#">CSF2 Products</a> )

## Target Details

---

Background:	CSF2 is a cytokine that controls the production, differentiation, and function of granulocytes and macrophages. The active form of the protein is found extracellularly as a homodimer. This gene has been localized to a cluster of related genes at chromosome region 5q31, which is known to be associated with interstitial deletions in the 5q- syndrome and acute myelogenous leukemia. Other genes in the cluster include those encoding interleukins 4, 5, and 13. [provided by RefSeq].
Molecular Weight:	16295
Gene ID:	1437
NCBI Accession:	<a href="#">NP_000749</a>
UniProt:	<a href="#">P04141</a>
Pathways:	<a href="#">JAK-STAT Signaling</a> , <a href="#">Cellular Response to Molecule of Bacterial Origin</a>

## Application Details

---

Application Notes:	IF: 1:10~50. WB: 1:1000. IHC-P: 1:50~100. FC: 1:10~50
Restrictions:	For Research Use only

## Handling

---

Format:	Liquid
Buffer:	Purified polyclonal antibody supplied in PBS with 0.09 % (W/V) sodium azide.
Preservative:	Sodium azide
Precaution of Use:	This product contains Sodium azide: a POISONOUS AND HAZARDOUS SUBSTANCE which should be handled by trained staff only.
Storage:	4 °C,-20 °C
Storage Comment:	Maintain refrigerated at 2-8 °C for up to 6 months. For long term storage store at -20 °C in small aliquots to prevent freeze-thaw cycles.
Expiry Date:	6 months

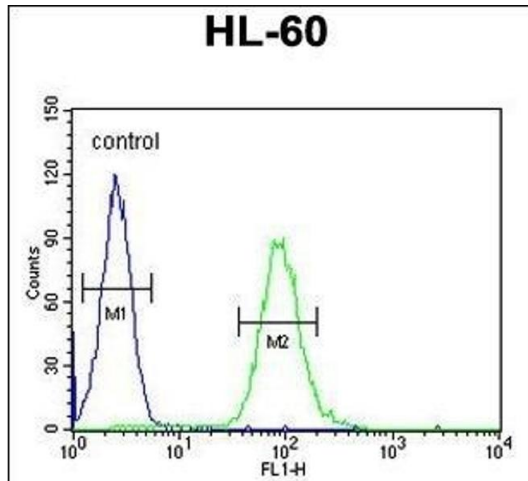
## Publications

---

Product cited in:	Liszt, Ley, Lieder, Behrens, Stöger, Reiner, Hochkogler, Köck, Marchiori, Hans, Widder, Krammer, Sanger, Somoza, Meyerhof, Somoza: "Caffeine induces gastric acid secretion via bitter taste
-------------------	--

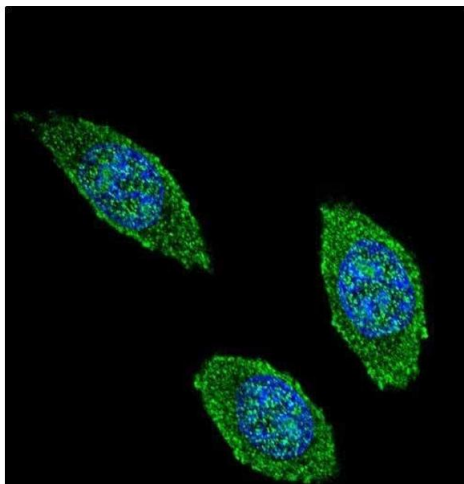
signaling in gastric parietal cells." in: **Proceedings of the National Academy of Sciences of the United States of America**, Vol. 114, Issue 30, pp. E6260-E6269, (2018) ([PubMed](#)).

Validation report #103541 for Western Blotting (WB)



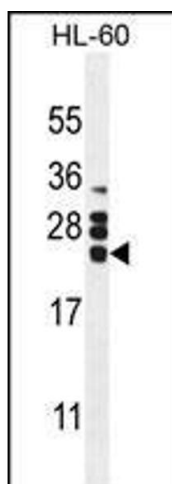
### Flow Cytometry

**Image 1.** CSF2 Antibody (Center) (ABIN654647 and ABIN2844343) flow cytometric analysis of HL-60 cells (right histogram) compared to a negative control cell (left histogram). FITC-conjugated goat-anti-rabbit secondary antibodies were used for the analysis.



### Immunofluorescence

**Image 2.** Confocal immunofluorescent analysis of CSF2 Antibody (Center) (ABIN654647 and ABIN2844343) with 293 cell followed by Alexa Fluor 488-conjugated goat anti-rabbit IgG (green). DAPI was used to stain the cell nuclear (blue).



### Western Blotting

**Image 3.** CSF2 Antibody (Center) (ABIN654647 and ABIN2844343) western blot analysis in HL60 cell line lysates (35 µg/lane). This demonstrates the CSF2 antibody detected the CSF2 protein (arrow).

Please check the [product details page](#) for more images. Overall 4 images are available for ABIN654647.