

Datasheet for ABIN654649

**anti-RENT2/UPF2 antibody (AA 630-656)****2** Images[Go to Product page](#)

## Overview

Quantity:	400 µL
Target:	RENT2/UPF2 (UPF2)
Binding Specificity:	AA 630-656
Reactivity:	Human
Host:	Rabbit
Clonality:	Polyclonal
Conjugate:	This RENT2/UPF2 antibody is un-conjugated
Application:	Western Blotting (WB), Flow Cytometry (FACS)

## Product Details

Immunogen:	This UPF2 antibody is generated from rabbits immunized with a KLH conjugated synthetic peptide between 630-656 amino acids from the Central region of human UPF2.
Clone:	RB21963
Isotype:	Ig Fraction
Purification:	This antibody is purified through a protein A column, followed by peptide affinity purification.

## Target Details

Target:	RENT2/UPF2 (UPF2)
Alternative Name:	UPF2 ( <a href="#">UPF2 Products</a> )
Background:	UPF2 is a protein that is part of a post-splicing multiprotein complex involved in both mRNA

## Target Details

nuclear export and mRNA surveillance. mRNA surveillance detects exported mRNAs with truncated open reading frames and initiates nonsense-mediated mRNA decay (NMD). When translation ends upstream from the last exon-exon junction, this triggers NMD to degrade mRNAs containing premature stop codons. This protein is located in the perinuclear area. It interacts with translation release factors and the proteins that are functional homologs of yeast Upf1p and Upf3p.

Molecular Weight: 147810

Gene ID: 26019

NCBI Accession: [NP\\_056357](#), [NP\\_542166](#)

UniProt: [Q9HAU5](#)

## Application Details

Application Notes: WB: 1:1000. FC: 1:10~50

Restrictions: For Research Use only

## Handling

Format: Liquid

Buffer: Purified polyclonal antibody supplied in PBS with 0.09 % (W/V) sodium azide.

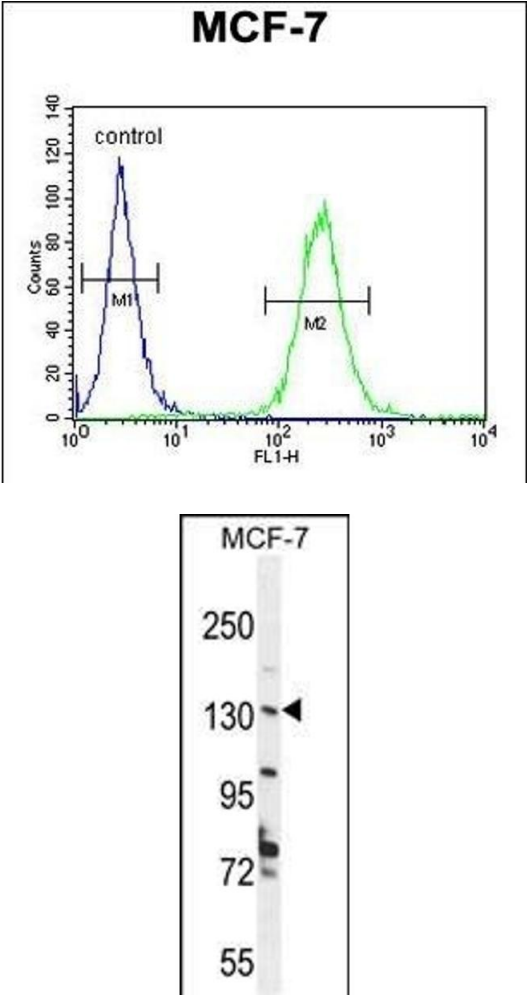
Preservative: Sodium azide

Precaution of Use: This product contains Sodium azide: a POISONOUS AND HAZARDOUS SUBSTANCE which should be handled by trained staff only.

Storage: 4 °C, -20 °C

Storage Comment: Maintain refrigerated at 2-8 °C for up to 6 months. For long term storage store at -20 °C in small aliquots to prevent freeze-thaw cycles.

Expiry Date: 6 months



Flow Cytometry

**Image 1.** UPF2 Antibody (Center) (ABIN654649 and ABIN2844345) flow cytometric analysis of MCF-7 cells (right histogram) compared to a negative control cell (left histogram).FITC-conjugated goat-anti-rabbit secondary antibodies were used for the analysis.

Western Blotting

**Image 2.** UPF2 Antibody (Center) (ABIN654649 and ABIN2844345) western blot analysis in MCF-7 cell line lysates (35 µg/lane).This demonstrates the UPF2 antibody detected the UPF2 protein (arrow).