

Datasheet for ABIN654651
anti-AMY2B antibody (N-Term)[Go to Product page](#)

4 Images

Overview

Quantity:	400 µL
Target:	AMY2B
Binding Specificity:	AA 74-100, N-Term
Reactivity:	Human
Host:	Rabbit
Clonality:	Polyclonal
Conjugate:	This AMY2B antibody is un-conjugated
Application:	Western Blotting (WB), Immunofluorescence (IF), Flow Cytometry (FACS), Immunohistochemistry (Paraffin-embedded Sections) (IHC (p))

Product Details

Immunogen:	This AMY2B antibody is generated from rabbits immunized with a KLH conjugated synthetic peptide between 74-100 amino acids from the N-terminal region of human AMY2B.
Clone:	RB23658
Isotype:	Ig Fraction
Purification:	This antibody is purified through a protein A column, followed by peptide affinity purification.

Target Details

Target:	AMY2B
Alternative Name:	AMY2B (AMY2B Products)

Target Details

Background: Amylases are secreted proteins that hydrolyze 1,4-alpha-glucoside bonds in oligosaccharides and polysaccharides, and thus catalyze the first step in digestion of dietary starch and glycogen. The human genome has a cluster of several amylase genes that are expressed at high levels in either salivary gland or pancreas. This gene encodes an amylase isoenzyme produced by the pancreas.

Molecular Weight: 57710

Gene ID: 280

NCBI Accession: [NP_066188](#)

UniProt: [P19961](#)

Application Details

Application Notes: IF: 1:10~50. WB: 1:1000. IHC-P: 1:50~100. FC: 1:10~50

Restrictions: For Research Use only

Handling

Format: Liquid

Buffer: Purified polyclonal antibody supplied in PBS with 0.09 % (W/V) sodium azide.

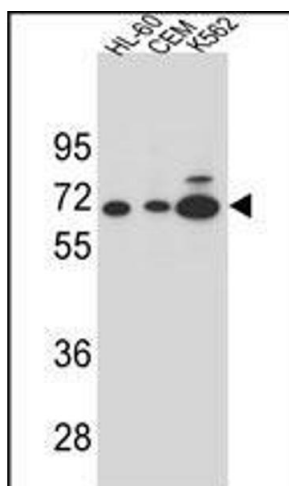
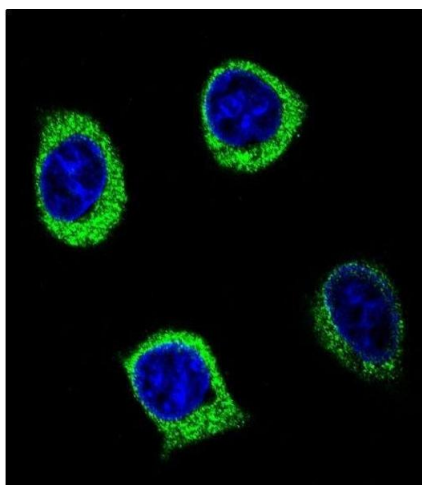
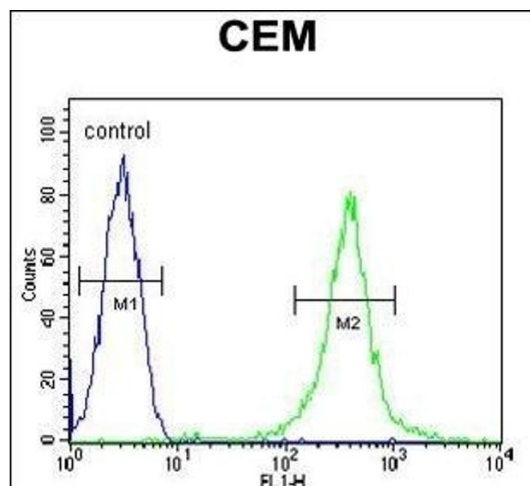
Preservative: Sodium azide

Precaution of Use: This product contains Sodium azide: a POISONOUS AND HAZARDOUS SUBSTANCE which should be handled by trained staff only.

Storage: 4 °C,-20 °C

Storage Comment: Maintain refrigerated at 2-8 °C for up to 6 months. For long term storage store at -20 °C in small aliquots to prevent freeze-thaw cycles.

Expiry Date: 6 months



Flow Cytometry

Image 1. Y2B Antibody (N-term) (ABIN654651 and ABIN2844347) flow cytometric analysis of CEM cells (right histogram) compared to a negative control cell (left histogram). FITC-conjugated goat-anti-rabbit secondary antibodies were used for the analysis.

Immunofluorescence

Image 2. Confocal immunofluorescent analysis of Y2B Antibody (N-term) (ABIN654651 and ABIN2844347) with 293 cells followed by Alexa Fluor 488-conjugated goat anti-rabbit IgG (green). DAPI was used to stain the cell nuclear (blue).

Western Blotting

Image 3. Y2B Antibody (N-term) (ABIN654651 and ABIN2844347) western blot analysis in HL-60, CEM and K562 cell line lysates (35 µg/lane). This demonstrates the Y2B antibody detected the Y2B protein (arrow).

Please check the [product details page](#) for more images. Overall 4 images are available for ABIN654651.