

Datasheet for ABIN654652

anti-ARHGAP10 antibody (AA 237-263)**3** Images[Go to Product page](#)

Overview

Quantity:	400 µL
Target:	ARHGAP10
Binding Specificity:	AA 237-263
Reactivity:	Human
Host:	Rabbit
Clonality:	Polyclonal
Conjugate:	This ARHGAP10 antibody is un-conjugated
Application:	Western Blotting (WB), Flow Cytometry (FACS), Immunohistochemistry (Paraffin-embedded Sections) (IHC (p))

Product Details

Immunogen:	This ARHGAP10 antibody is generated from rabbits immunized with a KLH conjugated synthetic peptide between 237-263 amino acids from the Central region of human ARHGAP10.
Clone:	RB24573
Isotype:	Ig Fraction
Predicted Reactivity:	B
Purification:	This antibody is purified through a protein A column, followed by peptide affinity purification.

Target Details

Target:	ARHGAP10
---------	----------

Target Details

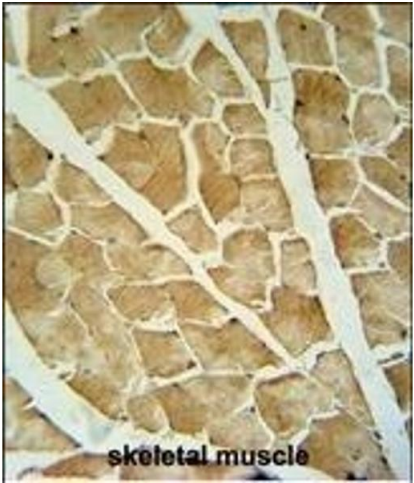
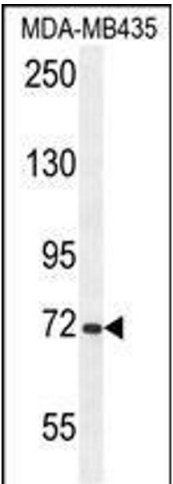
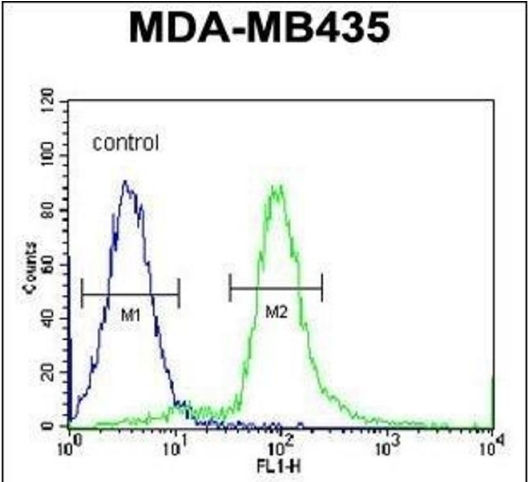
Alternative Name:	ARHGAP10 (ARHGAP10 Products)
Background:	GTPase activator for the small GTPases RhoA and Cdc42 by converting them to an inactive GDP-bound state. Essential for PTKB2 regulation of cytoskeletal organization via Rho family GTPases. Inhibits PAK2 proteolytic fragment PAK-2p34 kinase activity and changes its localization from the nucleus to the perinuclear region. Stabilizes PAK-2p34 thereby increasing stimulation of cell death (By similarity).
Molecular Weight:	89375
Gene ID:	79658
NCBI Accession:	NP_078881
UniProt:	A1A4S6

Application Details

Application Notes:	WB: 1:1000. IHC-P: 1:50~100. FC: 1:10~50
Restrictions:	For Research Use only

Handling

Format:	Liquid
Buffer:	Purified polyclonal antibody supplied in PBS with 0.09 % (W/V) sodium azide.
Preservative:	Sodium azide
Precaution of Use:	This product contains Sodium azide: a POISONOUS AND HAZARDOUS SUBSTANCE which should be handled by trained staff only.
Storage:	4 °C,-20 °C
Storage Comment:	Maintain refrigerated at 2-8 °C for up to 6 months. For long term storage store at -20 °C in small aliquots to prevent freeze-thaw cycles.
Expiry Date:	6 months



Flow Cytometry

Image 1. ARHG Antibody (Center) 695b flow cytometric analysis of MDA-M cells (right histogram) compared to a negative control cell (left histogram).FITC-conjugated goat-anti-rabbit secondary antibodies were used for the analysis.

Western Blotting

Image 2. ARHG Antibody (Center) 695b western blot analysis in MDA-M cell line lysates (35 µg/lane).This demonstrates the ARHG antibody detected the ARHG protein (arrow).

Immunohistochemistry (Paraffin-embedded Sections)

Image 3. ARHG antibody (Center) 695b immunohistochemistry analysis in formalin fixed and paraffin embedded human skeletal muscle followed by peroxidase conjugation of the secondary antibody and DAB staining. This data demonstrates the use of the ARHG antibody (Center) for immunohistochemistry. Clinical relevance has not been evaluated.