

Datasheet for ABIN654654
anti-B4GALT6 antibody (C-Term)

3 Images

[Go to Product page](#)

Overview

Quantity:	400 µL
Target:	B4GALT6
Binding Specificity:	AA 319-346, C-Term
Reactivity:	Human
Host:	Rabbit
Clonality:	Polyclonal
Conjugate:	This B4GALT6 antibody is un-conjugated
Application:	Western Blotting (WB), Flow Cytometry (FACS), Immunohistochemistry (Paraffin-embedded Sections) (IHC (p))

Product Details

Immunogen:	This B4GALT6 antibody is generated from rabbits immunized with a KLH conjugated synthetic peptide between 319-346 amino acids from the C-terminal region of human B4GALT6.
Clone:	RB24270
Isotype:	Ig Fraction
Predicted Reactivity:	M
Purification:	This antibody is purified through a protein A column, followed by peptide affinity purification.

Target Details

Target:	B4GALT6
---------	---------

Target Details

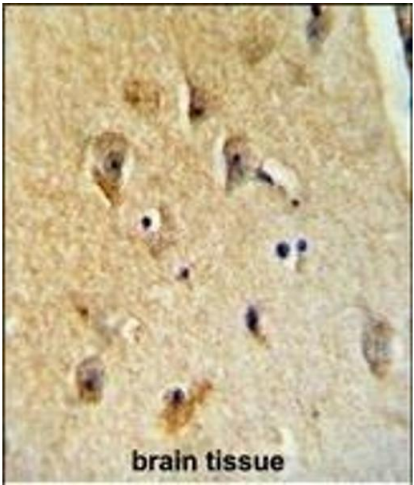
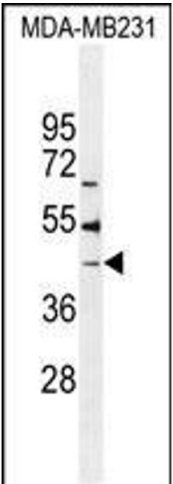
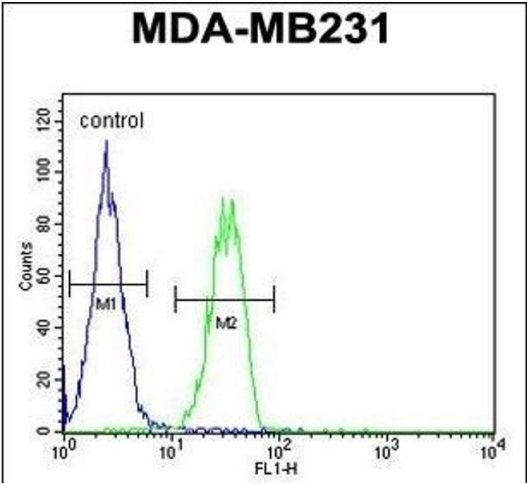
Alternative Name:	B4GALT6 (B4GALT6 Products)
Background:	<p>This gene is one of seven beta-1,4-galactosyltransferase (beta4GalT) genes. They encode type II membrane-bound glycoproteins that appear to have exclusive specificity for the donor substrate UDP-galactose, all transfer galactose in a beta1,4 linkage to similar acceptor sugars: GlcNAc, Glc, and Xyl. Each beta4GalT has a distinct function in the biosynthesis of different glycoconjugates and saccharide structures. As type II membrane proteins, they have an N-terminal hydrophobic signal sequence that directs the protein to the Golgi apparatus and which then remains uncleaved to function as a transmembrane anchor. By sequence similarity, the beta4GalTs form four groups: beta4GalT1 and beta4GalT2, beta4GalT3 and beta4GalT4, beta4GalT5 and beta4GalT6, and beta4GalT7. The enzyme encoded by this gene is a lactosylceramide synthase important for glycolipid biosynthesis.</p>
Molecular Weight:	44914
Gene ID:	9331
NCBI Accession:	NP_004766
UniProt:	Q9UBX8
Pathways:	Glycosaminoglycan Metabolic Process

Application Details

Application Notes:	WB: 1:1000. IHC-P: 1:50~100. FC: 1:10~50
Restrictions:	For Research Use only

Handling

Format:	Liquid
Buffer:	Purified polyclonal antibody supplied in PBS with 0.09 % (W/V) sodium azide.
Preservative:	Sodium azide
Precaution of Use:	This product contains Sodium azide: a POISONOUS AND HAZARDOUS SUBSTANCE which should be handled by trained staff only.
Storage:	4 °C, -20 °C
Storage Comment:	Maintain refrigerated at 2-8 °C for up to 6 months. For long term storage store at -20 °C in small aliquots to prevent freeze-thaw cycles.



Flow Cytometry

Image 1. B4GALT6 Antibody (C-term) (ABIN654654 and ABIN2844350) flow cytometric analysis of MDA-M cells (right histogram) compared to a negative control cell (left histogram). FITC-conjugated goat-anti-rabbit secondary antibodies were used for the analysis.

Western Blotting

Image 2. B4GALT6 Antibody (C-term) (ABIN654654 and ABIN2844350) western blot analysis in MDA-M cell line lysates (35 µg/lane). This demonstrates the B4GALT6 antibody detected the B4GALT6 protein (arrow).

Immunohistochemistry (Paraffin-embedded Sections)

Image 3. B4GALT6 Antibody (C-term) (ABIN654654 and ABIN2844350) immunohistochemistry analysis in formalin fixed and paraffin embedded human brain tissue followed by peroxidase conjugation of the secondary antibody and DAB staining. This data demonstrates the use of the B4GALT6 Antibody (C-term) for immunohistochemistry. Clinical relevance has not been evaluated.