

Datasheet for ABIN654656  
**anti-BEX1 antibody (AA 63-90)**[Go to Product page](#)

## 2 Images

## Overview

Quantity:	400 µL
Target:	BEX1
Binding Specificity:	AA 63-90
Reactivity:	Human
Host:	Rabbit
Clonality:	Polyclonal
Conjugate:	This BEX1 antibody is un-conjugated
Application:	Flow Cytometry (FACS), Immunohistochemistry (Paraffin-embedded Sections) (IHC (p))

## Product Details

Immunogen:	This BEX1 antibody is generated from rabbits immunized with a KLH conjugated synthetic peptide between 63-90 amino acids from the Central region of human BEX1.
Clone:	RB24272
Isotype:	Ig Fraction
Predicted Reactivity:	Pr
Purification:	This antibody is purified through a protein A column, followed by peptide affinity purification.

## Target Details

Target:	BEX1
Alternative Name:	BEX1 ( <a href="#">BEX1 Products</a> )

## Target Details

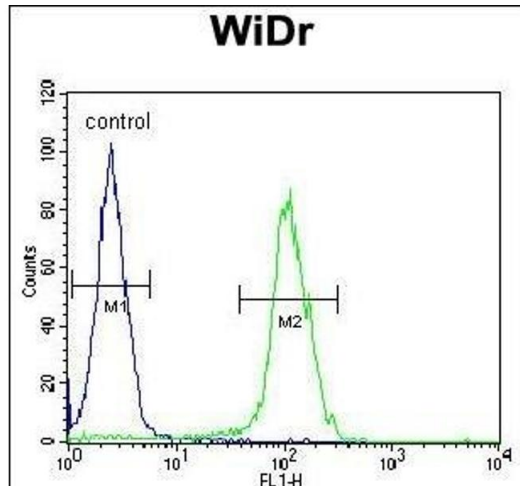
Background:	Signaling adapter molecule involved in p75NTR/NGFR signaling. Plays a role in cell cycle progression and neuronal differentiation. Inhibits neuronal differentiation in response to nerve growth factor (NGF). May act as a link between the cell cycle and neurotrophic factor signaling, possibly by functioning as an upstream modulator of receptor signaling, coordinating biological responses to external signals with internal cellular states (By similarity).
Molecular Weight:	14860
Gene ID:	55859
NCBI Accession:	<a href="#">NP_060946</a>
UniProt:	<a href="#">Q9HBH7</a>
Pathways:	<a href="#">Neurotrophin Signaling Pathway</a>

## Application Details

Application Notes:	IHC-P: 1:50~100. FC: 1:10~50
Restrictions:	For Research Use only

## Handling

Format:	Liquid
Buffer:	Purified polyclonal antibody supplied in PBS with 0.09 % (W/V) sodium azide.
Preservative:	Sodium azide
Precaution of Use:	This product contains Sodium azide: a POISONOUS AND HAZARDOUS SUBSTANCE which should be handled by trained staff only.
Storage:	4 °C, -20 °C
Storage Comment:	Maintain refrigerated at 2-8 °C for up to 6 months. For long term storage store at -20 °C in small aliquots to prevent freeze-thaw cycles.
Expiry Date:	6 months



### Flow Cytometry

**Image 1.** BEX1 Antibody (Center) (ABIN654656 and ABIN2844352) flow cytometric analysis of WiDr cells (right histogram) compared to a negative control cell (left histogram). FITC-conjugated goat-anti-rabbit secondary antibodies were used for the analysis.

### Immunohistochemistry (Paraffin-embedded Sections)

**Image 2.** BEX1 Antibody (Center) (ABIN654656 and ABIN2844352) immunohistochemistry analysis in formalin fixed and paraffin embedded human brain tissue followed by peroxidase conjugation of the secondary antibody and DAB staining. This data demonstrates the use of the BEX1 Antibody (Center) for immunohistochemistry. Clinical relevance has not been evaluated.