

Datasheet for ABIN654657  
**anti-BC052040 antibody (AA 167-193)**



[Go to Product page](#)

2 Images

Overview

Quantity:	400 µL
Target:	BC052040
Binding Specificity:	AA 167-193
Reactivity:	Human, Mouse
Host:	Rabbit
Clonality:	Polyclonal
Conjugate:	This BC052040 antibody is un-conjugated
Application:	Western Blotting (WB)

Product Details

Immunogen:	This C15orf41 antibody is generated from rabbits immunized with a KLH conjugated synthetic peptide between 167-193 amino acids from the Central region of human C15orf41.
Clone:	RB24275
Isotype:	Ig Fraction
Purification:	This antibody is purified through a protein A column, followed by peptide affinity purification.

Target Details

Target:	BC052040
Alternative Name:	C15orf41 ( <a href="#">BC052040 Products</a> )
Molecular Weight:	32264

## Target Details

Gene ID:	84529
NCBI Accession:	<a href="#">NP_001123482</a> , <a href="#">NP_115888</a>
UniProt:	<a href="#">Q9Y2V0</a>

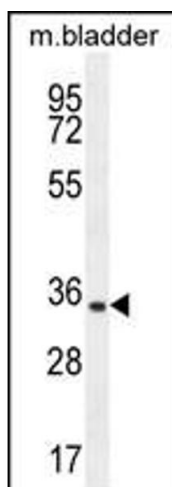
## Application Details

Application Notes:	WB: 1:1000. WB: 1:1000
Restrictions:	For Research Use only

## Handling

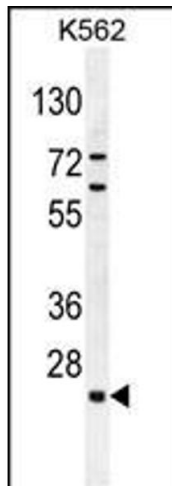
Format:	Liquid
Buffer:	Purified polyclonal antibody supplied in PBS with 0.09 % (W/V) sodium azide.
Preservative:	Sodium azide
Precaution of Use:	This product contains Sodium azide: a POISONOUS AND HAZARDOUS SUBSTANCE which should be handled by trained staff only.
Storage:	4 °C,-20 °C
Storage Comment:	Maintain refrigerated at 2-8 °C for up to 6 months. For long term storage store at -20 °C in small aliquots to prevent freeze-thaw cycles.
Expiry Date:	6 months

## Images



### Western Blotting

**Image 1.** C15orf41 Antibody (Center) (ABIN654657 and ABIN2844354) western blot analysis in mouse bladder tissue lysates (35 µg/lane). This demonstrates the C15orf41 antibody detected the C15orf41 protein (arrow).



### Western Blotting

**Image 2.** C15orf41 Antibody (Center) (ABIN654657 and ABIN2844354) western blot analysis in K562 cell line lysates (35 µg/lane). This demonstrates the C15orf41 antibody detected the C15orf41 protein (arrow).