

Datasheet for ABIN654660
anti-CADM1 antibody (N-Term)

3 Images

[Go to Product page](#)

Overview

Quantity:	400 µL
Target:	CADM1
Binding Specificity:	AA 66-94, N-Term
Reactivity:	Human, Mouse
Host:	Rabbit
Clonality:	Polyclonal
Conjugate:	This CADM1 antibody is un-conjugated
Application:	Western Blotting (WB), Immunohistochemistry (Paraffin-embedded Sections) (IHC (p))

Product Details

Immunogen:	This CADM1 antibody is generated from rabbits immunized with a KLH conjugated synthetic peptide between 66-94 amino acids from the N-terminal region of human CADM1.
Clone:	RB22685
Isotype:	Ig Fraction
Purification:	This antibody is purified through a protein A column, followed by peptide affinity purification.

Target Details

Target:	CADM1
Alternative Name:	CADM1 (CADM1 Products)
Background:	Mediates homophilic cell-cell adhesion in a Ca(2+)-independent manner. Also mediates

Target Details

heterophilic cell-cell adhesion with CADM3 and PVRL3 in a Ca(2+)-independent manner. Acts as a tumor suppressor in non-small-cell lung cancer (NSCLC) cells. Interaction with CRTAM promotes natural killer (NK) cell cytotoxicity and interferon-gamma (IFN-gamma) secretion by CD8+ cells in vitro as well as NK cell-mediated rejection of tumors expressing CADM3 in vivo. May contribute to the less invasive phenotypes of lepidic growth tumor cells. In mast cells, may mediate attachment to and promote communication with nerves. CADM1, together with MIF, is essential for development and survival of mast cells in vivo. May act as a synaptic cell adhesion molecule that drives synapse assembly. May be involved in neuronal migration, axon growth, pathfinding, and fasciculation on the axons of differentiating neurons. May play diverse roles in the spermatogenesis including in the adhesion of spermatocytes and spermatids to Sertoli cells and for their normal differentiation into mature spermatozoa.

Molecular Weight: 48509

Gene ID: 23705

NCBI Accession: [NP_001091987](#), [NP_055148](#)

UniProt: [Q9BY67](#)

Pathways: [Regulation of Leukocyte Mediated Immunity](#), [Positive Regulation of Immune Effector Process](#), [Cell-Cell Junction Organization](#), [Activated T Cell Proliferation](#)

Application Details

Application Notes: WB: 1:1000. WB: 1:1000. IHC-P: 1:50~100

Restrictions: For Research Use only

Handling

Format: Liquid

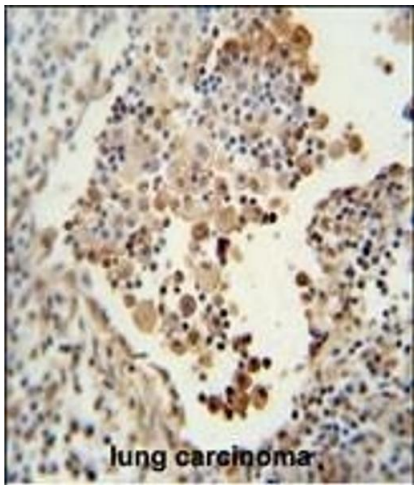
Buffer: Purified polyclonal antibody supplied in PBS with 0.09 % (W/V) sodium azide.

Preservative: Sodium azide

Precaution of Use: This product contains Sodium azide: a POISONOUS AND HAZARDOUS SUBSTANCE which should be handled by trained staff only.

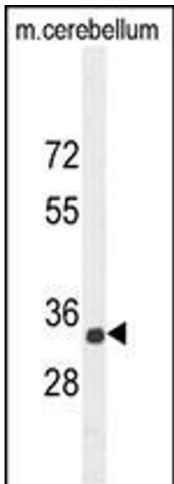
Storage: 4 °C,-20 °C

Storage Comment: Maintain refrigerated at 2-8 °C for up to 6 months. For long term storage store at -20 °C in small aliquots to prevent freeze-thaw cycles.



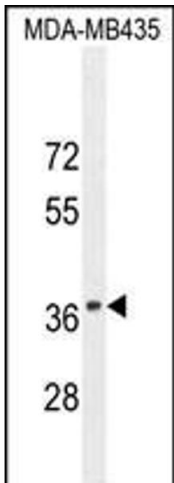
Immunohistochemistry (Paraffin-embedded Sections)

Image 1. CADM1 antibody (N-term) (ABIN654660 and ABIN2844356) immunohistochemistry analysis in formalin fixed and paraffin embedded human lung carcinoma followed by peroxidase conjugation of the secondary antibody and DAB staining. This data demonstrates the use of the CADM1 antibody (N-term) for immunohistochemistry. Clinical relevance has not been evaluated.



Western Blotting

Image 2. CADM1 Antibody (N-term) (ABIN654660 and ABIN2844356) western blot analysis in mouse cerebellum tissue lysates (35 µg/lane). This demonstrates the CADM1 antibody detected the CADM1 protein (arrow).



Western Blotting

Image 3. CADM1 Antibody (N-term) (ABIN654660 and ABIN2844356) western blot analysis in MDA-M cell line lysates (35 µg/lane). This demonstrates the CADM1 antibody detected the CADM1 protein (arrow).