

Datasheet for ABIN654664

anti-EPAS1 antibody (N-Term)**2** Images[Go to Product page](#)

Overview

Quantity:	400 µL
Target:	EPAS1
Binding Specificity:	AA 124-150, N-Term
Reactivity:	Human
Host:	Rabbit
Clonality:	Polyclonal
Conjugate:	This EPAS1 antibody is un-conjugated
Application:	Western Blotting (WB), Flow Cytometry (FACS)

Product Details

Immunogen:	This EPAS1 antibody is generated from rabbits immunized with a KLH conjugated synthetic peptide between 124-150 amino acids from the N-terminal region of human EPAS1.
Clone:	RB28543
Isotype:	Ig Fraction
Purification:	This antibody is purified through a protein A column, followed by peptide affinity purification.

Target Details

Target:	EPAS1
Alternative Name:	EPAS1 (EPAS1 Products)
Background:	This gene encodes a transcription factor involved in the induction of genes regulated by oxygen,

Target Details

which is induced as oxygen levels fall. The encoded protein contains a basic-helix-loop-helix domain protein dimerization domain as well as a domain found in proteins in signal transduction pathways which respond to oxygen levels. Mutations in this gene are associated with erythrocytosis familial type 4.

Molecular Weight: 96459

Gene ID: 2034

NCBI Accession: [NP_001421](#)

UniProt: [Q99814](#)

Pathways: [Signaling Events mediated by VEGFR1 and VEGFR2, Warburg Effect](#)

Application Details

Application Notes: WB: 1:1000. FC: 1:10~50

Restrictions: For Research Use only

Handling

Format: Liquid

Buffer: Purified polyclonal antibody supplied in PBS with 0.09 % (W/V) sodium azide.

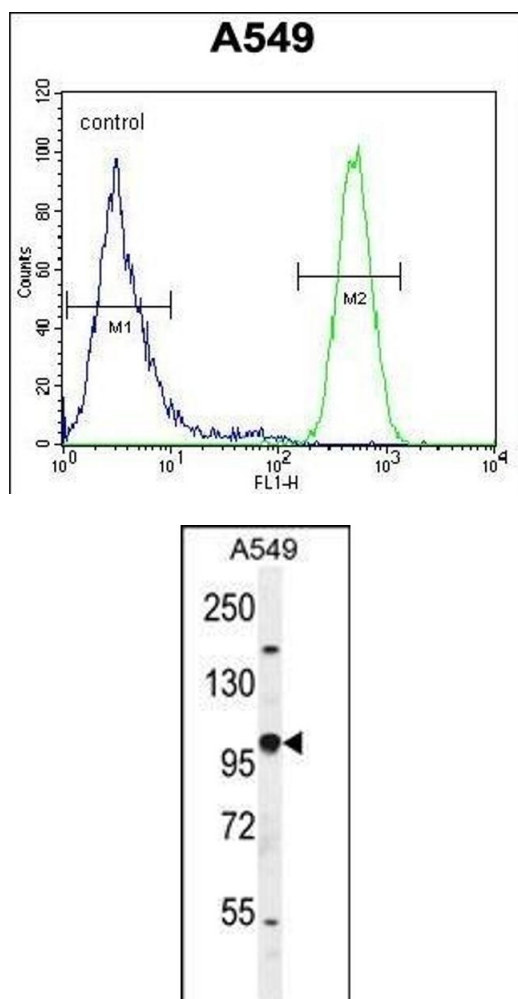
Preservative: Sodium azide

Precaution of Use: This product contains Sodium azide: a POISONOUS AND HAZARDOUS SUBSTANCE which should be handled by trained staff only.

Storage: 4 °C,-20 °C

Storage Comment: Maintain refrigerated at 2-8 °C for up to 6 months. For long term storage store at -20 °C in small aliquots to prevent freeze-thaw cycles.

Expiry Date: 6 months



Flow Cytometry

Image 1. ES1 Antibody (N-term) (ABIN654664 and ABIN2844360) flow cytometric analysis of A549 cells (right histogram) compared to a negative control cell (left histogram). FITC-conjugated goat-anti-rabbit secondary antibodies were used for the analysis.

Western Blotting

Image 2. ES1 Antibody (N-term) (ABIN654664 and ABIN2844360) western blot analysis in A549 cell line lysates (35 µg/lane). This demonstrates the ES1 antibody detected the ES1 protein (arrow).