

Datasheet for ABIN654669
anti-Claudin 6 antibody (AA 130-159)[Go to Product page](#)

1 Image

Overview

Quantity:	200 µL
Target:	Claudin 6 (CLDN6)
Binding Specificity:	AA 130-159
Reactivity:	Human, Mouse
Host:	Rabbit
Clonality:	Polyclonal
Conjugate:	This Claudin 6 antibody is un-conjugated
Application:	Western Blotting (WB)

Product Details

Immunogen:	This CLDN6 antibody is generated from rabbits immunized with a KLH conjugated synthetic peptide between 130-159 amino acids from the Central region of human CLDN6.
Clone:	RB24299
Isotype:	Ig Fraction
Predicted Reactivity:	Zf
Purification:	This antibody is purified through a protein A column, followed by peptide affinity purification.

Target Details

Target:	Claudin 6 (CLDN6)
Alternative Name:	CLDN6 (CLDN6 Products)

Target Details

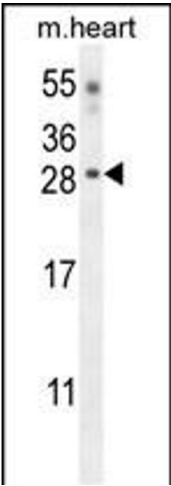
Background:	Tight junctions represent one mode of cell-to-cell adhesion in epithelial or endothelial cell sheets, forming continuous seals around cells and serving as a physical barrier to prevent solutes and water from passing freely through the paracellular space. These junctions are comprised of sets of continuous networking strands in the outwardly facing cytoplasmic leaflet, with complementary grooves in the inwardly facing extracytoplasmic leaflet. This gene encodes a component of tight junction strands, which is a member of the claudin family. The protein is an integral membrane protein and is one of the entry cofactors for hepatitis C virus. The gene methylation may be involved in esophageal tumorigenesis. This gene is adjacent to another family member CLDN9 on chromosome 16.
Molecular Weight:	23292
Gene ID:	9074
NCBI Accession:	NP_067018
UniProt:	P56747
Pathways:	Hepatitis C

Application Details

Application Notes:	WB: 1:1000
Restrictions:	For Research Use only

Handling

Format:	Liquid
Buffer:	Purified polyclonal antibody supplied in PBS with 0.09 % (W/V) sodium azide.
Preservative:	Sodium azide
Precaution of Use:	This product contains Sodium azide: a POISONOUS AND HAZARDOUS SUBSTANCE which should be handled by trained staff only.
Storage:	4 °C,-20 °C
Storage Comment:	Maintain refrigerated at 2-8 °C for up to 6 months. For long term storage store at -20 °C in small aliquots to prevent freeze-thaw cycles.
Expiry Date:	6 months



Western Blotting

Image 1. CLDN6 Antibody (Center) (ABIN654669 and ABIN2844365) western blot analysis in mouse heart tissue lysates (35 µg/lane). This demonstrates the CLDN6 antibody detected the CLDN6 protein (arrow).