

Datasheet for ABIN654673
anti-ENTPD3 antibody (C-Term)[Go to Product page](#)

3 Images

Overview

Quantity:	400 µL
Target:	ENTPD3
Binding Specificity:	AA 496-527, C-Term
Reactivity:	Human
Host:	Rabbit
Clonality:	Polyclonal
Conjugate:	This ENTPD3 antibody is un-conjugated
Application:	Western Blotting (WB), Flow Cytometry (FACS), Immunohistochemistry (Paraffin-embedded Sections) (IHC (p))

Product Details

Immunogen:	This ENTPD3 antibody is generated from rabbits immunized with a KLH conjugated synthetic peptide between 496-527 amino acids from the C-terminal region of human ENTPD3.
Clone:	RB28547
Isotype:	IgG
Purification:	This antibody is purified through a protein A column, followed by peptide affinity purification.

Target Details

Target:	ENTPD3
Alternative Name:	ENTPD3 (ENTPD3 Products)

Target Details

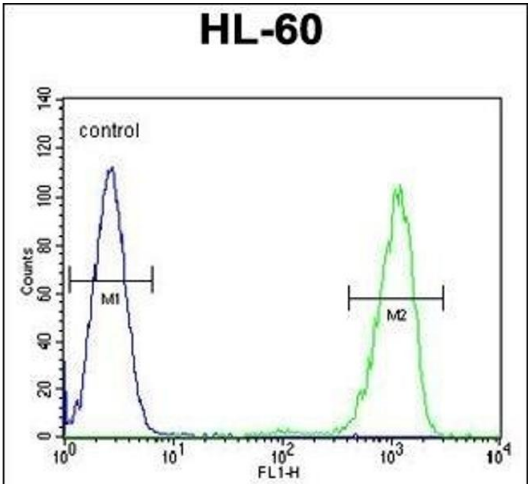
Background:	ENTPD3 is similar to E-type nucleotidases (NTPases). NTPases, such as CD39, mediate catabolism of extracellular nucleotides. ENTPD3 contains 4 apyrase-conserved regions which is characteristic of NTPases.
Molecular Weight:	59105
Gene ID:	956
NCBI Accession:	NP_001239
UniProt:	O75355

Application Details

Application Notes:	WB: 1:1000. IHC-P: 1:50~100. FC: 1:10~50
Restrictions:	For Research Use only

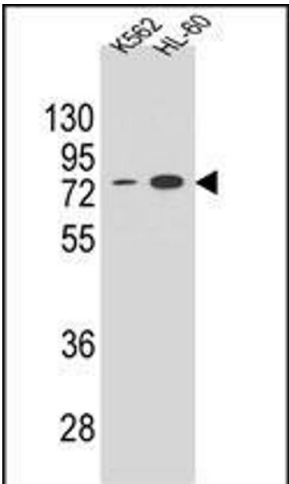
Handling

Format:	Liquid
Buffer:	Purified polyclonal antibody supplied in PBS with 0.09 % (W/V) sodium azide.
Preservative:	Sodium azide
Precaution of Use:	This product contains Sodium azide: a POISONOUS AND HAZARDOUS SUBSTANCE which should be handled by trained staff only.
Storage:	4 °C, -20 °C
Storage Comment:	Maintain refrigerated at 2-8 °C for up to 6 months. For long term storage store at -20 °C in small aliquots to prevent freeze-thaw cycles.
Expiry Date:	6 months



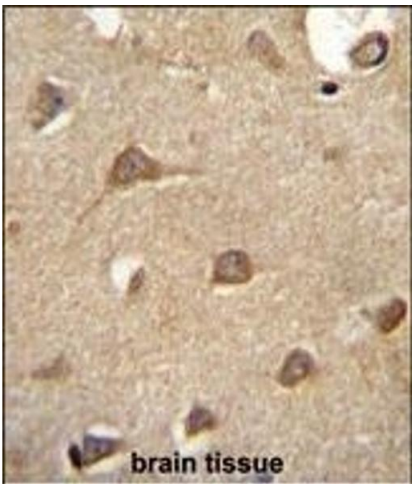
Flow Cytometry

Image 1. ENTPD3 Antibody (C-term) (ABIN654673 and ABIN2844368) flow cytometric analysis of HL-60 cells (right histogram) compared to a negative control (left histogram). FITC-conjugated goat-anti-rabbit secondary antibodies were used for the analysis.



Western Blotting

Image 2. ENTPD3 Antibody (C-term) (ABIN654673 and ABIN2844368) western blot analysis in K562 and HL-60 cell line lysates (35 µg/lane). This demonstrates the ENTPD3 antibody detected the ENTPD3 protein (arrow).



Immunohistochemistry (Paraffin-embedded Sections)

Image 3. ENTPD3 antibody (C-term) (ABIN654673 and ABIN2844368) immunohistochemistry analysis in formalin fixed and paraffin embedded human brain tissue followed by peroxidase conjugation of the secondary antibody and DAB staining. This data demonstrates the use of ENTPD3 antibody (C-term) for immunohistochemistry. Clinical relevance has not been evaluated.