

Datasheet for ABIN654674  
**anti-ESCO2 antibody (AA 132-161)**[Go to Product page](#)

## 2 Images

## Overview

Quantity:	400 µL
Target:	ESCO2
Binding Specificity:	AA 132-161
Reactivity:	Human, Mouse
Host:	Rabbit
Clonality:	Polyclonal
Conjugate:	This ESCO2 antibody is un-conjugated
Application:	Western Blotting (WB), Flow Cytometry (FACS)

## Product Details

Immunogen:	This ESCO2 antibody is generated from rabbits immunized with a KLH conjugated synthetic peptide between 132-161 amino acids from the Central region of human ESCO2.
Clone:	RB28548
Isotype:	Ig Fraction
Purification:	This antibody is purified through a protein A column, followed by peptide affinity purification.

## Target Details

Target:	ESCO2
Alternative Name:	ESCO2 ( <a href="#">ESCO2 Products</a> )
Background:	This gene encodes a protein that may have acetyltransferase activity and may be required for

## Target Details

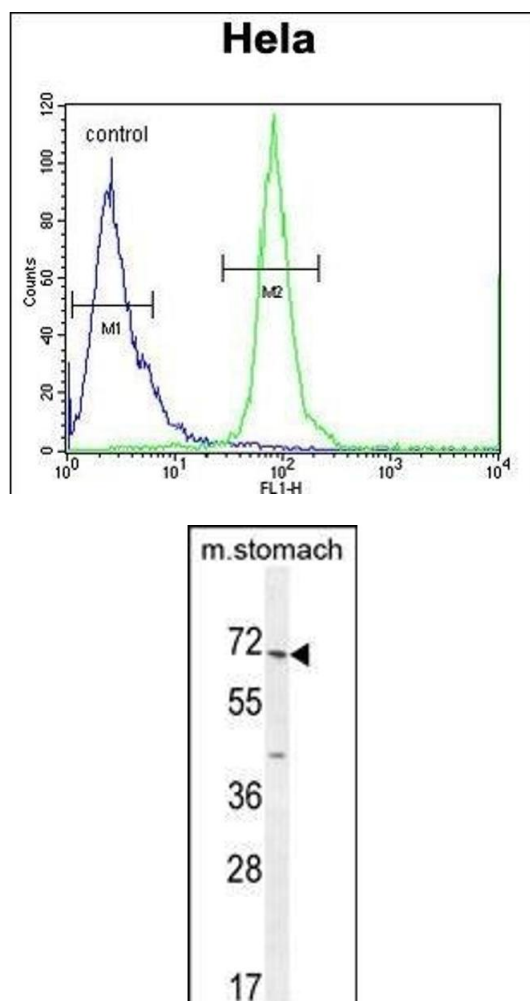
	the establishment of sister chromatid cohesion during the S phase of mitosis. Mutations in this gene have been associated with Roberts syndrome.
Molecular Weight:	68307
Gene ID:	157570
NCBI Accession:	<a href="#">NP_001017420</a>
UniProt:	<a href="#">Q56NI9</a>
Pathways:	<a href="#">Positive Regulation of Endopeptidase Activity</a>

## Application Details

Application Notes:	WB: 1:1000. FC: 1:10~50
Restrictions:	For Research Use only

## Handling

Format:	Liquid
Buffer:	Purified polyclonal antibody supplied in PBS with 0.09 % (W/V) sodium azide.
Preservative:	Sodium azide
Precaution of Use:	This product contains Sodium azide: a POISONOUS AND HAZARDOUS SUBSTANCE which should be handled by trained staff only.
Storage:	4 °C,-20 °C
Storage Comment:	Maintain refrigerated at 2-8 °C for up to 6 months. For long term storage store at -20 °C in small aliquots to prevent freeze-thaw cycles.
Expiry Date:	6 months



### Flow Cytometry

**Image 1.** ESCO2 Antibody (Center) (ABIN654674 and ABIN2844369) flow cytometric analysis of Hela cells (right histogram) compared to a negative control cell (left histogram). FITC-conjugated goat-anti-rabbit secondary antibodies were used for the analysis.

### Western Blotting

**Image 2.** ESCO2 Antibody (Center) (ABIN654674 and ABIN2844369) western blot analysis in mouse stomach tissue lysates (35 µg/lane). This demonstrates the ESCO2 antibody detected the ESCO2 protein (arrow).