



[Go to Product page](#)

Datasheet for ABIN654675
anti-ETS1 antibody (N-Term)

3 Images

Overview

Quantity:	400 µL
Target:	ETS1
Binding Specificity:	AA 43-70, N-Term
Reactivity:	Human
Host:	Rabbit
Clonality:	Polyclonal
Conjugate:	This ETS1 antibody is un-conjugated
Application:	Western Blotting (WB), Immunofluorescence (IF), Flow Cytometry (FACS)

Product Details

Immunogen:	This ETS1 antibody is generated from rabbits immunized with a KLH conjugated synthetic peptide between 43-70 amino acids from the N-terminal region of human ETS1.
Clone:	RB24587
Isotype:	IgG
Predicted Reactivity:	M, Rat
Purification:	This antibody is purified through a protein A column, followed by peptide affinity purification.

Target Details

Target:	ETS1
Alternative Name:	ETS1 (ETS1 Products)

Target Details

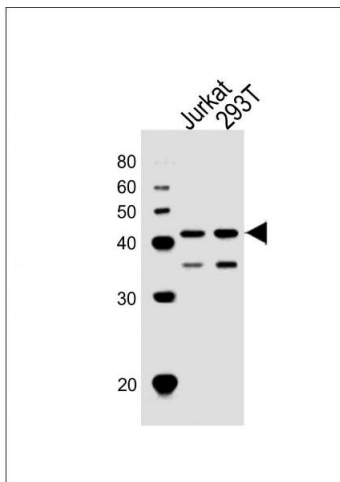
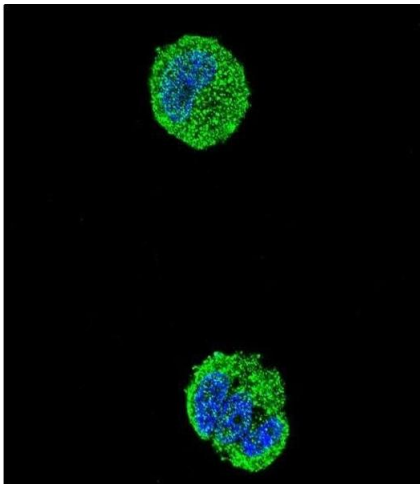
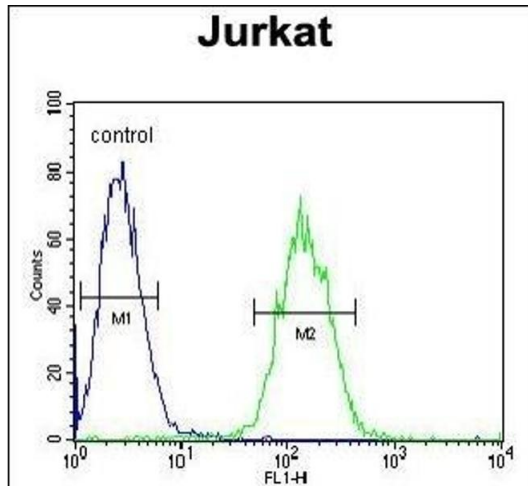
Background:	ETS transcriptions factors, such as ETS1, regulate numerous genes and are involved in stem cell development, cell senescence and death, and tumorigenesis. The conserved ETS domain within these proteins is a winged helix-turn-helix DNA-binding domain that recognizes the core consensus DNA sequence GGAA/T of target genes (summary by Dwyer et al., 2007 [PubMed 17986575]).
Molecular Weight:	50408
Gene ID:	2113
NCBI Accession:	NP_001137292 , NP_001155894 , NP_005229
UniProt:	P14921

Application Details

Application Notes:	IF: 1:10~50. WB: 1:1000. FC: 1:10~50
Restrictions:	For Research Use only

Handling

Format:	Liquid
Buffer:	Purified polyclonal antibody supplied in PBS with 0.09 % (W/V) sodium azide.
Preservative:	Sodium azide
Precaution of Use:	This product contains Sodium azide: a POISONOUS AND HAZARDOUS SUBSTANCE which should be handled by trained staff only.
Storage:	4 °C,-20 °C
Storage Comment:	Maintain refrigerated at 2-8 °C for up to 6 months. For long term storage store at -20 °C in small aliquots to prevent freeze-thaw cycles.
Expiry Date:	6 months



Flow Cytometry

Image 1. ETS1 Antibody (N-term) (ABIN654675 and ABIN2844370) flow cytometric analysis of Jurkat cells (right histogram) compared to a negative control cell (left histogram). FITC-conjugated goat-anti-rabbit secondary antibodies were used for the analysis.

Immunofluorescence

Image 2. Confocal immunofluorescent analysis of ETS1 Antibody (N-term) (ABIN654675 and ABIN2844370) with MCF-7 cell followed by Alexa Fluor® 488-conjugated goat anti-rabbit IgG (green). DAPI was used to stain the cell nuclear (blue).

Western Blotting

Image 3. All lanes : Anti-ETS1 Antibody (N-term) at 1:1000 dilution Lane 1: Jurkat whole cell lysates Lane 2: 293T whole cell lysates Lysates/proteins at 20 µg per lane. Secondary Goat Anti-Rabbit IgG, (H+L), Peroxidase conjugated at 1/10000 dilution Predicted band size : 50 kDa Blocking/Dilution buffer: 5 % NFDN/TBST.