



[Go to Product page](#)

Datasheet for ABIN654680

anti-GPD1L antibody (N-Term)

4 Images

Overview

Quantity:	400 µL
Target:	GPD1L
Binding Specificity:	AA 44-73, N-Term
Reactivity:	Human, Mouse
Host:	Rabbit
Clonality:	Polyclonal
Conjugate:	This GPD1L antibody is un-conjugated
Application:	Western Blotting (WB), Flow Cytometry (FACS), Immunohistochemistry (Paraffin-embedded Sections) (IHC (p))

Product Details

Immunogen:	This GPD1L antibody is generated from rabbits immunized with a KLH conjugated synthetic peptide between 44-73 amino acids from the N-terminal region of human GPD1L.
Clone:	RB28552
Isotype:	Ig Fraction
Purification:	This antibody is purified through a protein A column, followed by peptide affinity purification.

Target Details

Target:	GPD1L
Alternative Name:	GPD1L (GPD1L Products)

Target Details

Background: The protein encoded by this gene catalyzes the conversion of sn-glycerol 3-phosphate to glycerone phosphate. The encoded protein is found in the cytoplasm, associated with the plasma membrane, where it binds the sodium channel, voltage-gated, type V, alpha subunit (SCN5A). Defects in this gene are a cause of Brugada syndrome type 2 (BRS2) as well as sudden infant death syndrome (SIDS).

Molecular Weight: 38419

Gene ID: 23171

NCBI Accession: [NP_055956](#)

UniProt: [Q8N335](#)

Application Details

Application Notes: WB: 1:1000. IHC-P: 1:50~100. FC: 1:10~50

Restrictions: For Research Use only

Handling

Format: Liquid

Buffer: Purified polyclonal antibody supplied in PBS with 0.09 % (W/V) sodium azide.

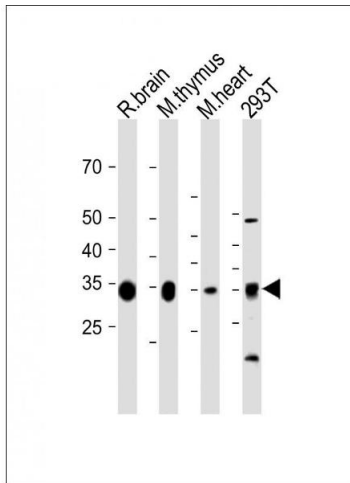
Preservative: Sodium azide

Precaution of Use: This product contains Sodium azide: a POISONOUS AND HAZARDOUS SUBSTANCE which should be handled by trained staff only.

Storage: 4 °C,-20 °C

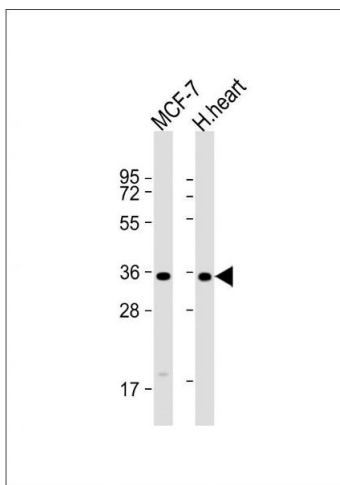
Storage Comment: Maintain refrigerated at 2-8 °C for up to 6 months. For long term storage store at -20 °C in small aliquots to prevent freeze-thaw cycles.

Expiry Date: 6 months



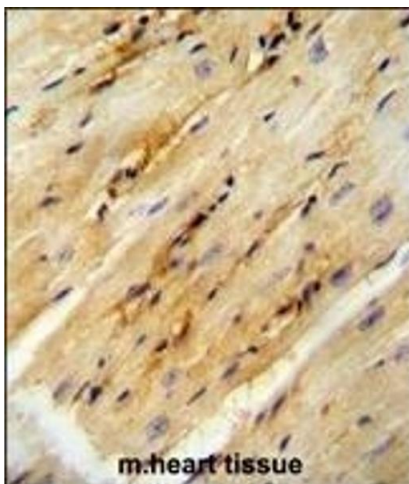
Western Blotting

Image 1. All lanes : Anti-GPD1L Antibody (N-term) at 1:1000 dilution Lane 1: Rat brain tissue lysate Lane 2: Mouse thymus tissue lysate Lane 3: Mouse heart tissue lysate Lane 4: 293T cell lysate Lysates/proteins at 20 µg per lane. Secondary Goat Anti-Rabbit IgG, (H+L), Peroxidase conjugated (AS) at 1/15000 dilution. Observed band size : 100 kDa Blocking/Dilution buffer: 5 % NFDm/TBST.



Western Blotting

Image 2. All lanes : Anti-GPD1L Antibody (N-term) at 1:1000 dilution Lane 1: MCF-7 whole cell lysate Lane 2: human heart lysate Lysates/proteins at 20 µg per lane. Secondary Goat Anti-Rabbit IgG, (H+L), Peroxidase conjugated at 1/10000 dilution. Predicted band size : 38 kDa Blocking/Dilution buffer: 5 % NFDm/TBST.



Immunohistochemistry (Paraffin-embedded Sections)

Image 3. GPD1L antibody (N-term) (ABIN654680 and ABIN2844374) immunohistochemistry analysis in formalin fixed and paraffin embedded mouse heart tissue followed by peroxidase conjugation of the secondary antibody and DAB staining. This data demonstrates the use of the GPD1L antibody (N-term) for immunohistochemistry. Clinical relevance has not been evaluated.

Please check the [product details page](#) for more images. Overall 4 images are available for ABIN654680.